

MUNDAY'S

Edmund Street, Camberwell

£525,000



Big and bright ground floor modern apartment of 872 square feet, with its own front door, a private patio (which wraps the flat's external walls), a long lease, two double bedrooms and two bathrooms - one is an en suite.

The property has been owned just once from new. It is an excellent live-in or let-out home to own, and the location is a strong one. You are super close to Burgess Park (which has seen great investment). Walk 5-10 minutes to central Camberwell, or circa 20 to central Peckham.

Munday's Estate Agents Ltd.
2 Mary Boast Walk
London SE5 8SP
020 3318 8900

www.mundays.com

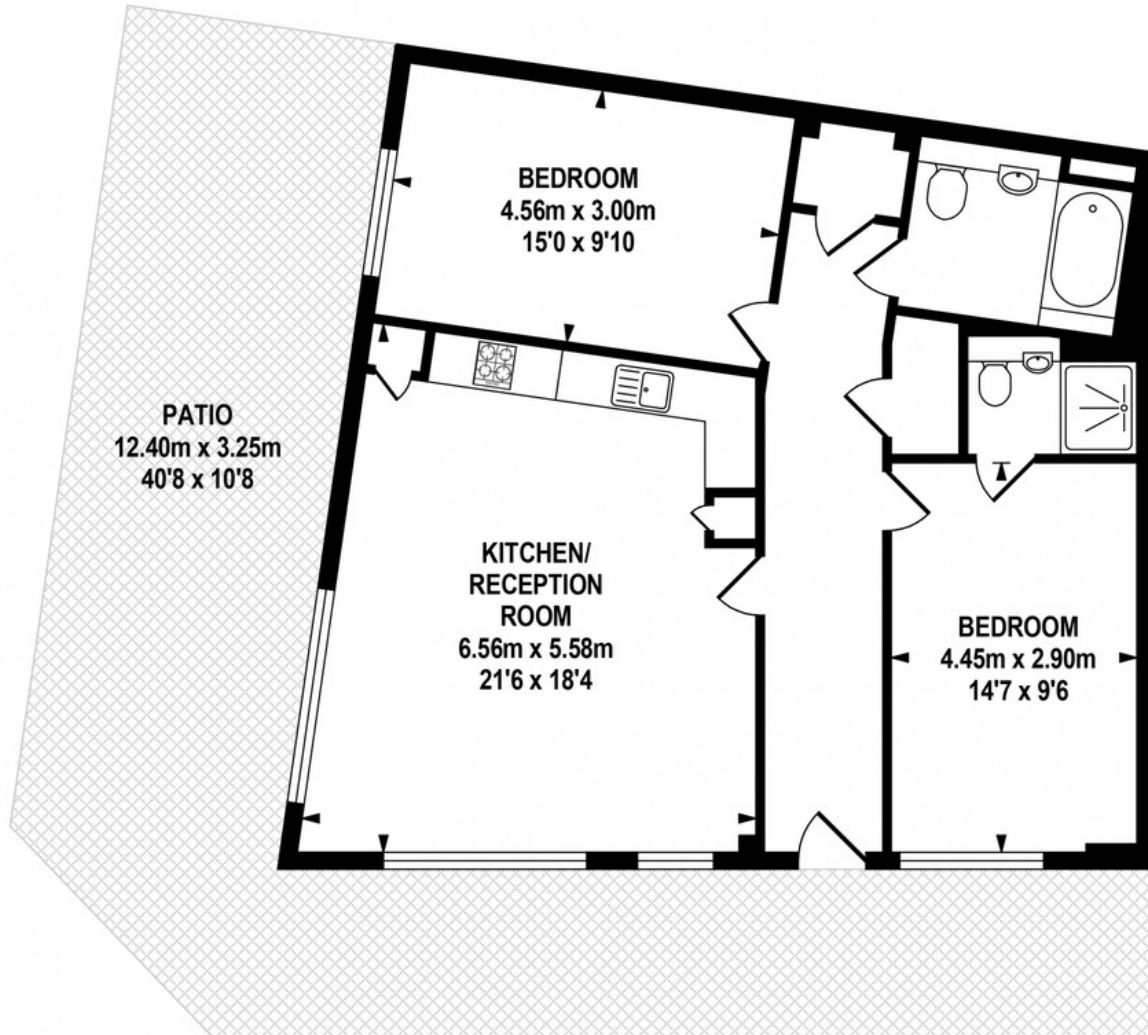
MUNDAY'S



Munday's Estate Agents Ltd.
2 Mary Boast Walk
London SE5 8SP
020 3318 8900

www.mundays.com

MUNDAY'S



GROUND FLOOR
APPROX. FLOOR
AREA 81.03 SQ.M.
(872 SQ.FT.)



TOTAL APPROX.FLOOR AREA 81.03 SQ.M. (872 SQ.FT.)

Whilst every effort is made to accurately reproduce these floor plans, measurements are approximate, not to scale and for illustrative purposes only.
Dulwich Energy Assessors Ltd with © London Living www.london-living.com

Munday's Estate Agents Ltd.
2 Mary Boast Walk
London SE5 8SP
020 3318 8900

www.mundays.com