

MUNDAY'S

Dressington Avenue, Ladywell

£625,000



Offers in excess of £625,000.

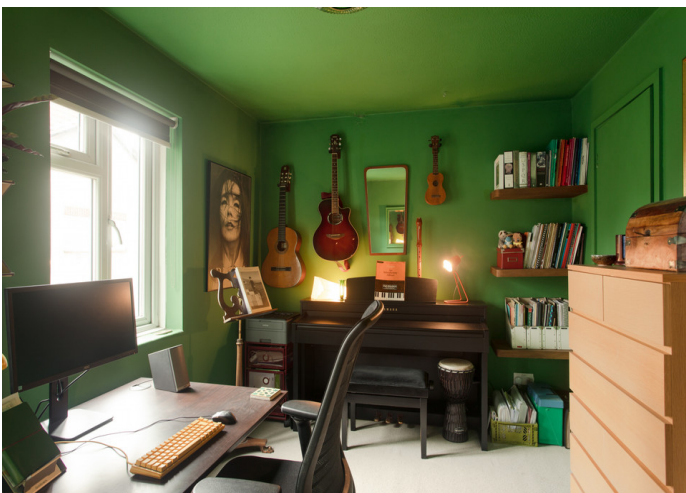
Delightful two double bedroom double-glazed eighties semi, on a great plot which gives you a front garden with off-street parking, and a wide rear garden.

The location is just lovely! A sleepy yet well-connected cul de sac near Ladywell's village-style centre and its Fare Zone 2 Station, with just a nine minute journey-time to London Bridge!

Munday's Estate Agents Ltd.
2 Mary Boast Walk
London SE5 8SP
020 3318 8900

www.mundays.com

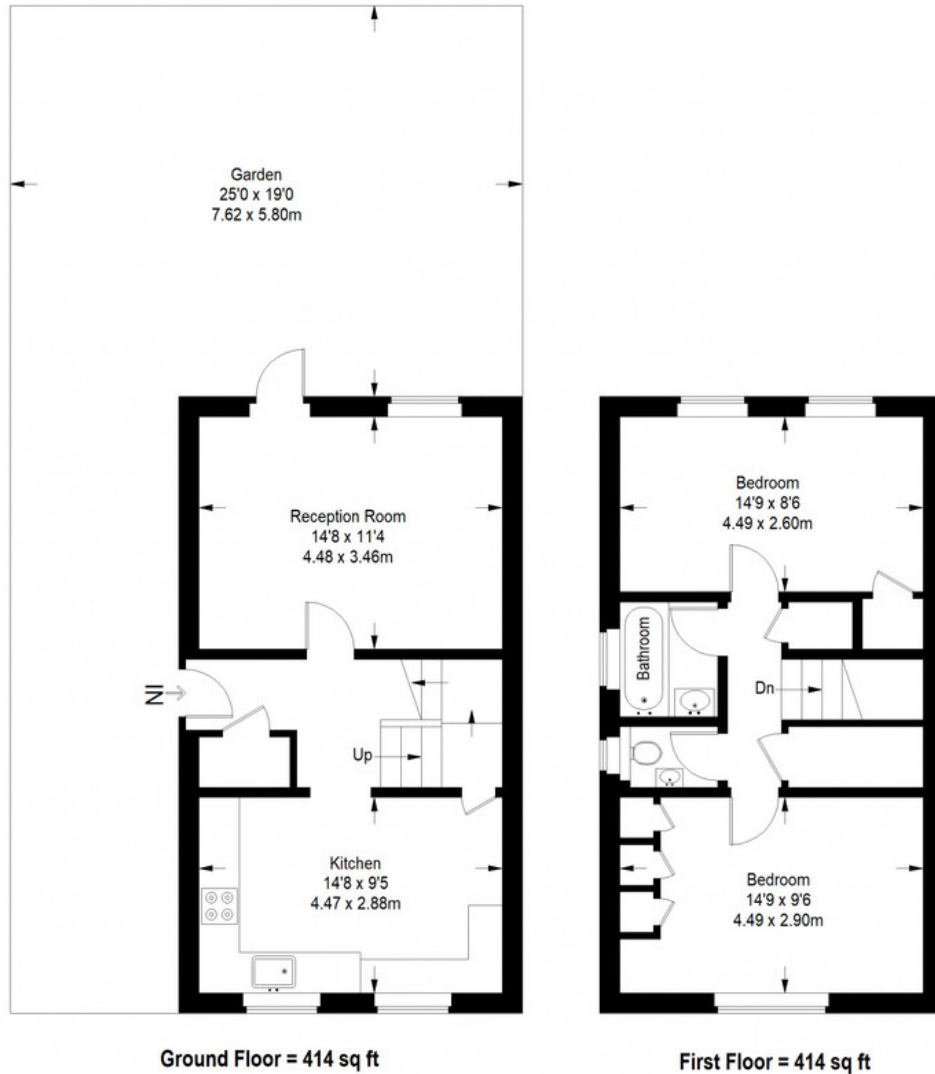
MUNDAY'S



Munday's Estate Agents Ltd.
2 Mary Boast Walk
London SE5 8SP
020 3318 8900

www.mundays.com

Dressington Avenue SE4



Approximate Gross Internal Area
GROUND FLOOR = 414 sq ft / 38.46 sq m
FIRST FLOOR = 414 sq ft / 38.46 sq m
Total = 828 sq ft / 76.92 sq m



This plan is for layout guidance only. Not drawn to scale unless stated. Windows and door openings are approximate. Whilst every care is taken in the preparation of this plan, please check all dimensions, shapes and compass bearings before making any decisions reliant upon them. (ID357409)