

Crystal Palace Road, East Dulwich

£550,000



Offers in excess of £550,000.

Gorgeous garden flat alert! As well as the sunny south-east facing garden, your new and chain free pad - which will suit you to a tee - boasts its own front door, side access, and off-street parking (the front garden and wide side area is all demised to the flat).

This is a one bedroom Victorian conversion pad of the oversized variety, measuring in at 691 square feet, with bonus features to boot: including a little home office and an independent utility room (both are windowed).

Further, champion golfer Henry Cotton (1907-1987) used to live in this building - check out that blue plaque!

The location is an ever-popular residential road that's within a short walk of North Cross Road (with its delightful Saturday market) Lordship Lane, Bellenden Road and Rye Lane, Goose Green and Peckham Rye

MUNDAY'S

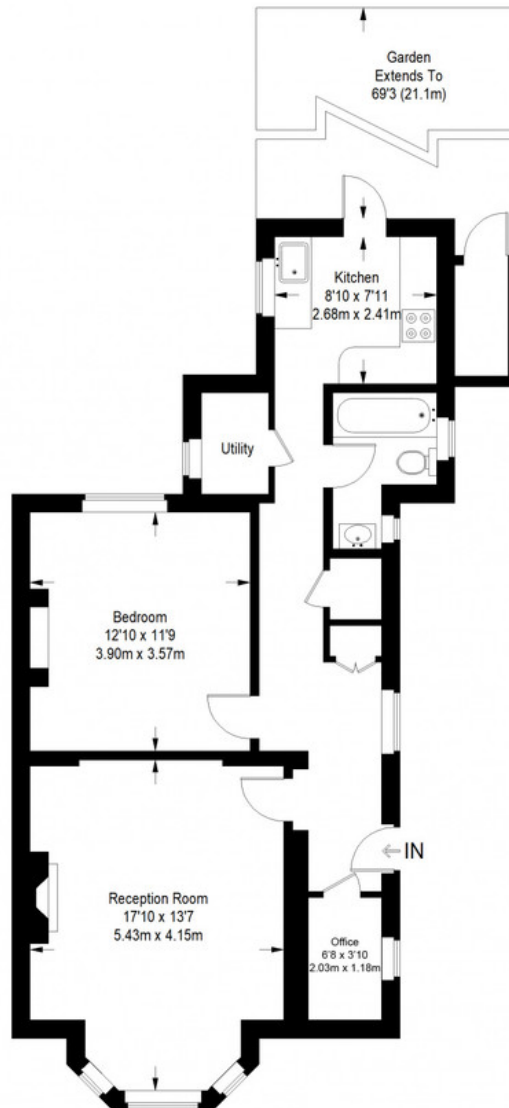


Munday's Estate Agents Ltd.  
2 Mary Boast Walk  
London SE5 8SP  
020 3318 8900

[www.mundays.com](http://www.mundays.com)

# MUNDAY'S

## Crystal Palace Road



Ground Floor = 691 sq ft



Approximate Gross Internal Area  
GROUND FLOOR = 691 sq ft / 64.19 sq m  
Total = 691 sq ft / 64.19 sq m

This plan is for layout guidance only. Not drawn to scale unless stated. Windows and door openings are approximate. Whilst every care is taken in the preparation of this plan, please check all dimensions, shapes and compass bearings before making any decisions reliant upon them. (ID357409)

*Munday's Estate Agents Ltd.*  
2 Mary Boast Walk  
London SE5 8SP  
020 3318 8900

[www.mundays.com](http://www.mundays.com)