

MUNDAY'S

Councillor Street, Camberwell

£635,000



Spacious and well-presented two double bedroom period maisonette of 768 square feet, with private outside space (with direct access from the reception).

Find it on a side-street near central Camberwell (five minutes by foot) and Oval tube (14 minutes). Permit-parking is on-street. Share of Freehold.

*Munday's Estate Agents Ltd.*  
2 Mary Boast Walk  
London SE5 8SP  
020 3318 8900

[www.mundays.com](http://www.mundays.com)



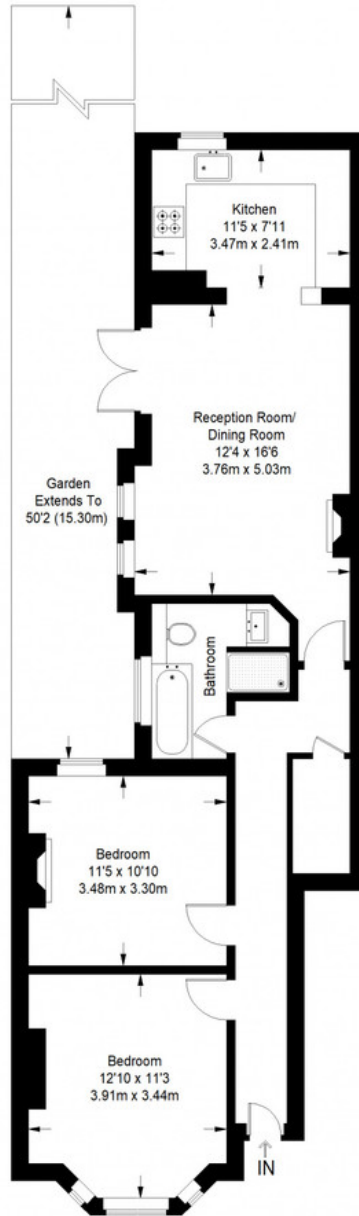
MUNDAY'S



*Munday's Estate Agents Ltd.*  
2 Mary Boast Walk  
London SE5 8SP  
020 3318 8900

[www.mundays.com](http://www.mundays.com)

## Councillor Street



**Ground Floor = 768 sq ft**

Approximate Gross Internal Area  
GROUND FLOOR = 768 sq ft / 71.35 sq m  
Total = 768 sq ft / 71.35 sq m



This plan is for layout guidance only. Not drawn to scale unless stated. Windows and door openings are approximate. Whilst every care is taken in the preparation of this plan, please check all dimensions, shapes and compass bearings before making any decisions reliant upon them. (ID357409)