

MUNDAY'S

Cormont Road, Camberwell

£1,500,000



Lambeth's Minet Conservation Area hosts this substantial and characterful Victorian semi-detached house over three floors, with five bedrooms and a well-established south-west facing garden (with side access).

There's more! You are facing marvellous Myatt's Fields Park, and the house is being sold chain free.

The handsome home is in reasonable nick (please note though that the previous kitchen has been largely removed), but would welcome renovation and extension - you can create your dream pad! You have a head start here too, as PP has already been granted for the: 'erection of a single storey ground floor side infill extension, enlargement of existing French doors to rear, plus installation of solar panels and roof lights'.

Myatt's Fields (Victorian 14-acre) Park is mere strides from the door, as is the popular nursery 'The Nest'. And your closest stations are Loughborough Junction (10 minutes by foot) and Stockwell, Oval and Denmark Hill (all within 20 minutes).

Munday's Estate Agents Ltd.
2 Mary Boast Walk
London SE5 8SP
020 3318 8900

www.mundays.com

MUNDAY'S

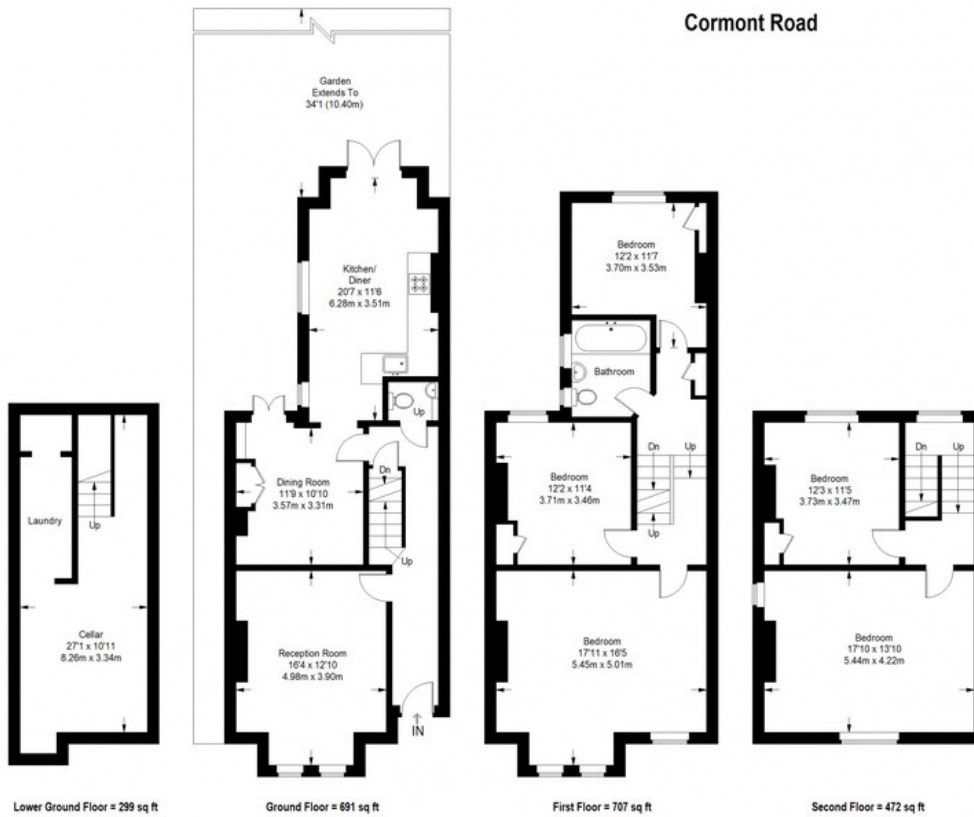


Munday's Estate Agents Ltd.
2 Mary Boast Walk
London SE5 8SP
020 3318 8900

www.mundays.com

MUNDAY'S

Cormont Road



Approximate Gross Internal Area
 LOWER GROUND FLOOR = 299 sq ft / 27.78 sq m
 GROUND FLOOR = 691 sq ft / 64.19 sq m
 FIRST FLOOR = 707 sq ft / 65.68 sq m
 SECOND FLOOR = 472 sq ft / 43.85 sq m
 Total = 2169 sq ft / 201.50 sq m



This plan is for layout guidance only. Not drawn to scale unless stated. Windows and door openings are approximate. Whilst every care is taken in the preparation of this plan, please check all dimensions, shapes and compass bearings before making any decisions reliant upon them. (D0357409)

Munday's Estate Agents Ltd.
 2 Mary Boast Walk
 London SE5 8SP
 020 3318 8900

www.mundays.com