

Copleston Road, Peckham Rye

£799,950



Who doesn't love a garden flat? This two double bedroom Victorian conversion delight has a sunny garden extending to nearly 60 feet, which faces east with a twist of south. It also has two bathrooms; one being en suite to the principal bedroom. The pleasing property has been recently (and beautifully) extended and refurbished.

The location is a winning one as well: a popular tree-lined residential street which sits at the top of Choumert Road - putting you within a 10 minute walk of both Peckham Rye and East Dulwich stations (both Fare Zone 2). Residents have permit-parking.

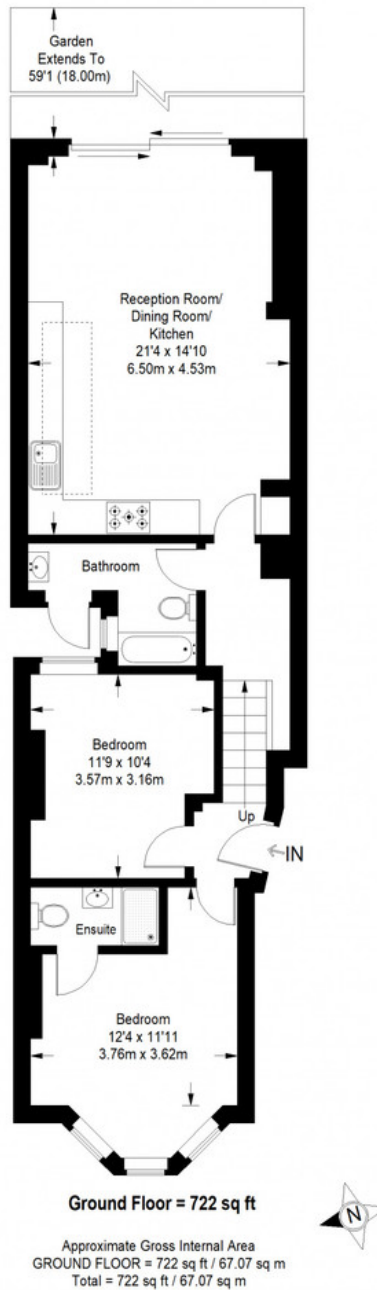
MUNDAY'S



*Munday's Estate Agents Ltd.*  
2 Mary Boast Walk  
London SE5 8SP  
020 3318 8900

[www.mundays.com](http://www.mundays.com)

## Copleston Road



This plan is for layout guidance only. Not drawn to scale unless stated. Windows and door openings are approximate. Whilst every care is taken in the preparation of this plan, please check all dimensions, shapes and compass bearings before making any decisions reliant upon them. (ID357409)