

MUNDAY'S

Coldharbour Lane, Camberwell

£500,000



Really cool oversized one bedroom purpose-built flat (circa 1900), within Denmark Mansions on Coldharbour Lane - which connects Camberwell to Brixton. A large communal garden completes the inviting package.

Your new home is set between the ever-popular town centres of Camberwell and Brixton, near two Fare Zone 2 stations (Loughborough Junction is seven minutes by foot, Denmark Hill Station is 10) and great bus routes.

*Munday's Estate Agents Ltd.*  
2 Mary Boast Walk  
London SE5 8SP  
020 3318 8900

[www.mundays.com](http://www.mundays.com)



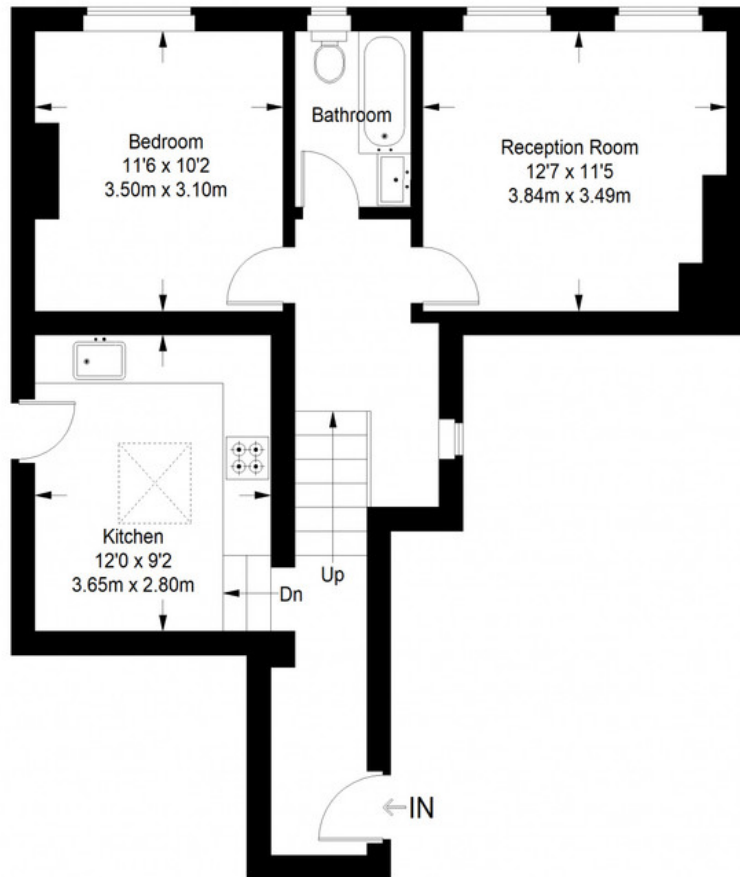
MUNDAY'S



*Munday's Estate Agents Ltd.*  
2 Mary Boast Walk  
London SE5 8SP  
020 3318 8900

[www.mundays.com](http://www.mundays.com)

## Denmark Mansions



**Raised Ground Floor = 568 sq ft**

Approximate Gross Internal Area  
RAISED GROUND FLOOR = 568 sq ft / 52.77 sq m  
Total = 568 sq ft / 52.77 sq m



This plan is for layout guidance only. Not drawn to scale unless stated. Windows and door openings are approximate. Whilst every care is taken in the preparation of this plan, please check all dimensions, shapes and compass bearings before making any decisions reliant upon them. (ID357409)