

Clarewood Walk, Brixton

£425,000



Delightful two double bedroom ex-LA maisonette of 855 square feet, with its own front door and a sunny private balcony - which is accessed off the generous reception space and spans the width of the property.

Find your new pad within Southwyck House, just a few minutes from central Brixton, and five from Brixton tube and regular stations.

A bit of history: the building was designed in 1968-70 by a team of architects (including Magda Borowiecka), and built between 1972-1981. The building needed to account for the South Cross Route motorway passing adjacent to it. Although the motorway plan was scrapped in 1973, the design was kept.

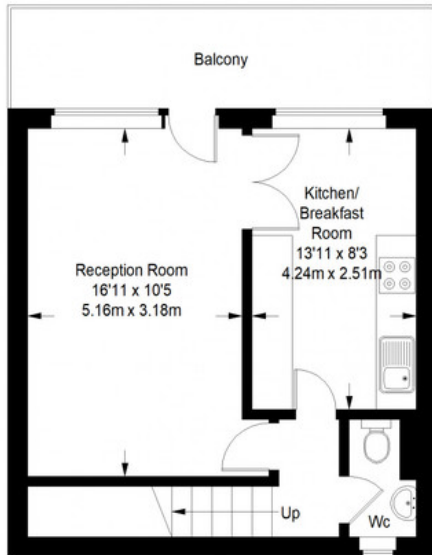
MUNDAY'S



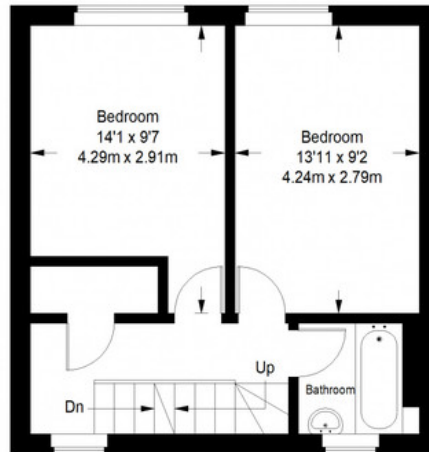
Munday's Estate Agents Ltd.
2 Mary Boast Walk
London SE5 8SP
020 3318 8900

www.mundays.com

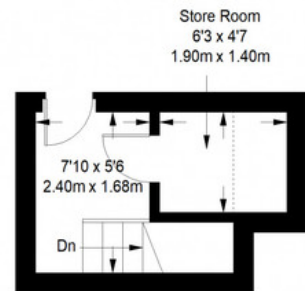
Southwyck House, Brixton



Fifth Floor = 383 sq ft



Sixth Floor = 381 sq ft



Seventh Floor = 91 sq ft

Approximate Gross Internal Area
 FIFTH FLOOR = 383 sq ft / 35.58 sq m
 SIXTH FLOOR = 381 sq ft / 35.39 sq m
 SEVENTH FLOOR = 91 sq ft / 8.45 sq m
 Total = 855 sq ft / 79.43 sq m



This plan is for layout guidance only. Not drawn to scale unless stated. Windows and door openings are approximate. Whilst every care is taken in the preparation of this plan, please check all dimensions, shapes and compass bearings before making any decisions reliant upon them. (ID357409)