

MUNDAY'S

Choumert Square, Peckham Rye

£750,000



Offers in excess of £750,000.

Webster Little Architects – in collaboration with the property's current owners – have brought this dilapidated two bedroom Victorian cottage sensitively back to life, welcoming it into 2026. Chain free.

Your new home has been completely stripped back and remodelled, making the most of every available cubic centimetre while retaining the spirit of times past (we love the painted exposed brickwork, exposed beams, and opened-up fireplaces!), and adding built-in storage in high-quality materials.

The house is brand-new-ready to occupy, with such treats as beautifully-chosen light fittings, engineered oak floors, and high-end integrated appliances.

Munday's Estate Agents Ltd.
2 Mary Boast Walk
London SE5 8SP
020 3318 8900

www.mundays.com

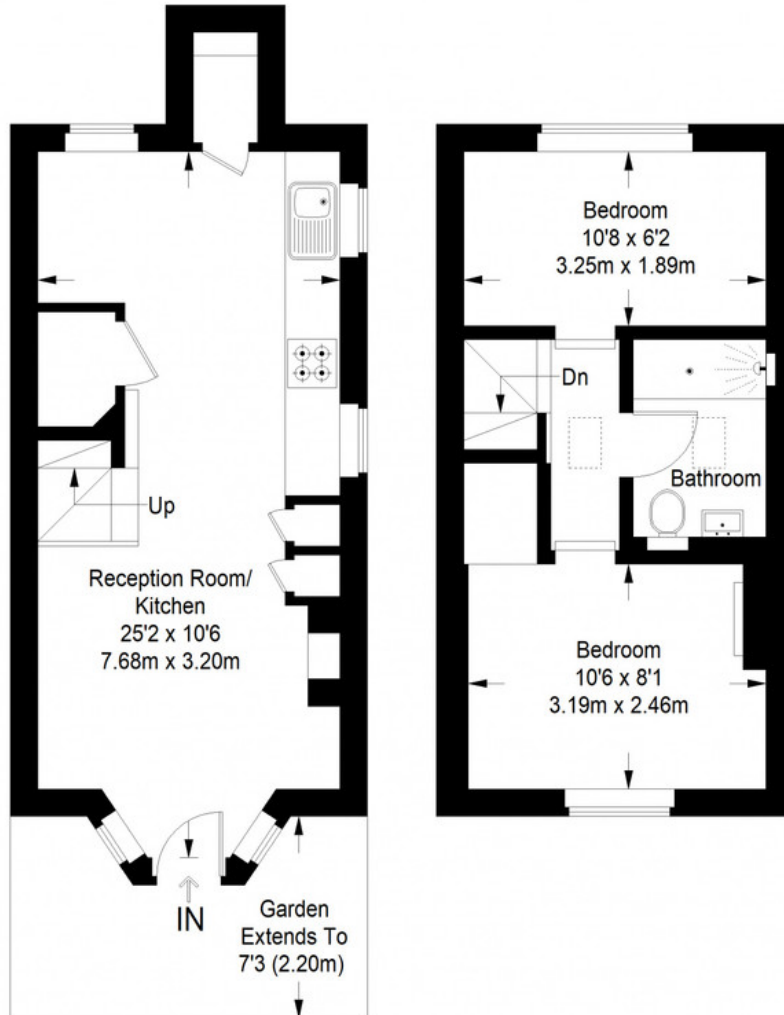
MUNDAY'S



Munday's Estate Agents Ltd.
2 Mary Boast Walk
London SE5 8SP
020 3318 8900

www.mundays.com

Choumert Squre, SE15



Ground Floor = 270 sq ft

First Floor = 247 sq ft

Approximate Gross Internal Area
GROUND FLOOR = 270 sq ft / 25.08 sq m
FIRST FLOOR = 247 sq ft / 22.95 sq m
Total = 517 sq ft / 48.03 sq m



This plan is for layout guidance only. Not drawn to scale unless stated. Windows and door openings are approximate. Whilst every care is taken in the preparation of this plan, please check all dimensions, shapes and compass bearings before making any decisions reliant upon them. (ID357409)