

Choumert Square, Peckham Rye

£599,950



Pleasing cottage in an idyllic spot! Choumert Square is a picture-postcard pocket of Peckham, just a few minutes from both Peckham Rye Station and Bellenden Road.

It is a tucked-away pedestrian-only Victorian laneway which has featured multiple times on Gardeners' World and in various publications. Residents of the 46 cottages (which make up Choumert Square) share a generous communal garden at the end of the central path.

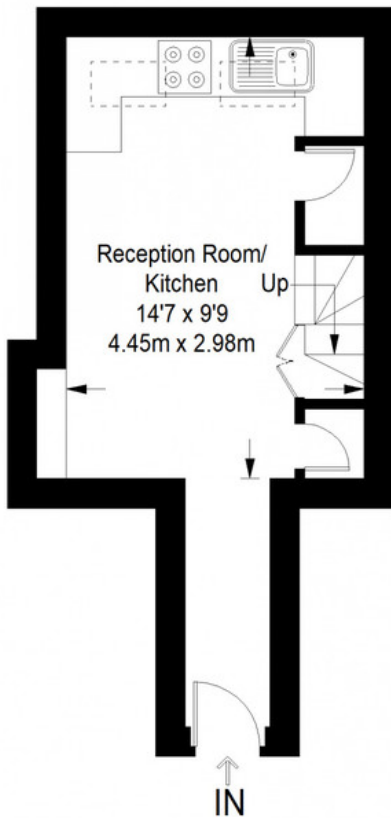
MUNDAY'S



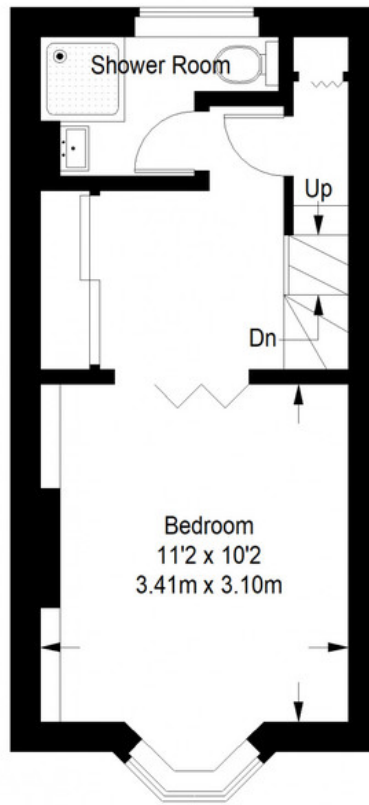
Munday's Estate Agents Ltd.
2 Mary Boast Walk
London SE5 8SP
020 3318 8900

www.mundays.com

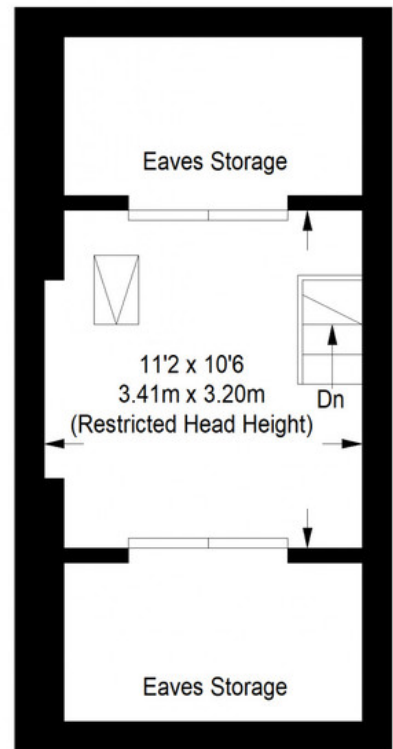
Choumert Square



Ground Floor = 168 sq ft



First Floor = 235 sq ft



Second Floor = 117 sq ft

Approximate Gross Internal Area
 GROUND FLOOR = 168 sq ft / 15.61 sq m
 FIRST FLOOR = 235 sq ft / 21.83 sq m
 Total = 403 sq ft / 37.44 sq m



This plan is for layout guidance only. Not drawn to scale unless stated. Windows and door openings are approximate. Whilst every care is taken in the preparation of this plan, please check all dimensions, shapes and compass bearings before making any decisions reliant upon them. (ID357409)