

MUNDAY'S

Choumert Square, Peckham Rye

£750,000



Interior-designer owned and renovated two bedroom cottage in a seriously special spot: Choumert Square is a picture-postcard pocket of Peckham, just a few minutes from both Peckham Rye Station and Bellenden Road.

It is a tucked-away pedestrian-only Victorian laneway which has featured multiple times on *Gardeners' World* and in various publications. Residents of the 46 cottages - which make up Choumert Square - share a generous communal garden at the end of the central path.

The house has been thoroughly, sensitively and expertly (and expensively!) refurbished. You are in for a total treat.

Munday's Estate Agents Ltd.
2 Mary Boast Walk
London SE5 8SP
020 3318 8900

www.mundays.com

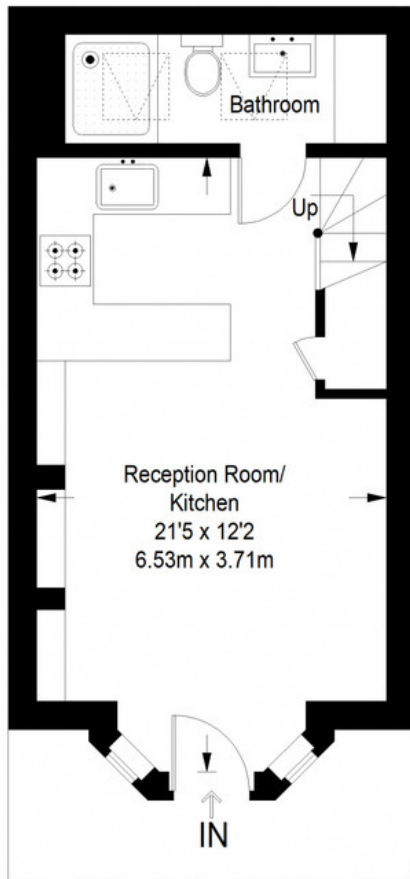
MUNDAY'S



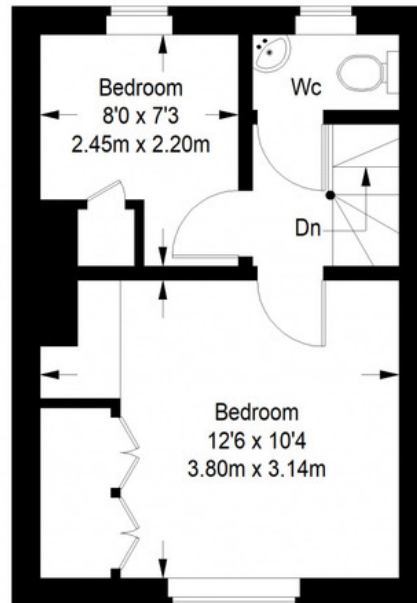
Munday's Estate Agents Ltd.
2 Mary Boast Walk
London SE5 8SP
020 3318 8900

www.mundays.com

Choumert Square



Ground Floor = 297 sq ft



First Floor = 235 sq ft

Approximate Gross Internal Area
 GROUND FLOOR = 297 sq ft / 28 sq m
 FIRST FLOOR = 235 sq ft / 22 sq m
 Total = 532 sq ft / 50 sq m



This plan is for layout guidance only. Not drawn to scale unless stated. Windows and door openings are approximate. Whilst every care is taken in the preparation of this plan, please check all dimensions, shapes and compass bearings before making any decisions reliant upon them. (ID357409)