

## Choumert Square, Peckham Rye

£585,000



Choumert Square is a picture-postcard patch of Peckham, only a few minutes from Peckham Rye Station and Bellenden Road.

It is a pedestrian-only Victorian laneway which has featured multiple times on *Gardeners' World*, and in various publications.

Residents of the 46 cottages - which make up Choumert Square - share a generous communal garden at the end of the central path.

This modernised yet charming and characterful house - at the entrance-end - has a strong layout, with an open-plan kitchen and reception spaces to the ground floor, and a south-facing double bedroom and windowed bathroom to the first floor. It is all very well planned and executed, with lots of thoughtful built-in storage about the place.



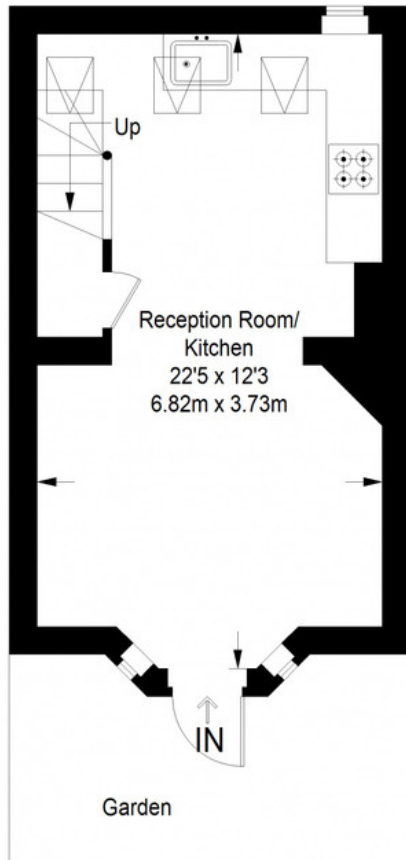
MUNDAY'S



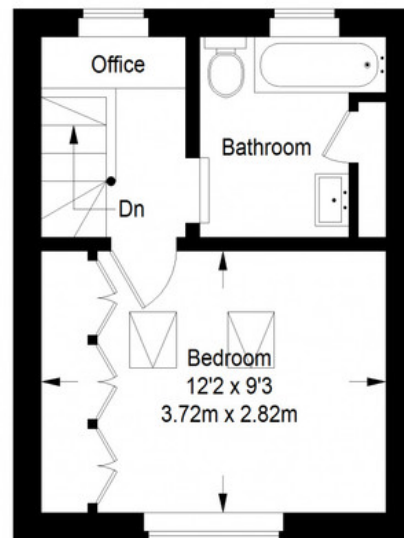
Munday's Estate Agents Ltd.  
2 Mary Boast Walk  
London SE5 8SP  
020 3318 8900

[www.mundays.com](http://www.mundays.com)

## Choumert Square



**Ground Floor = 262 sq ft**



**First Floor = 203 sq ft**

Approximate Gross Internal Area  
 GROUND FLOOR = 262 sq ft / 24.34 sq m  
 FIRST FLOOR = 203 sq ft / 18.86 sq m  
 Total = 465 sq ft / 43.20 sq m



This plan is for layout guidance only. Not drawn to scale unless stated. Windows and door openings are approximate. Whilst every care is taken in the preparation of this plan, please check all dimensions, shapes and compass bearings before making any decisions reliant upon them. (ID357409)