

Choumert Road, Peckham Rye

£1,295,000



Many SE15 residents refer to Choumert Road as 'the Champs-Élysées of Peckham'. That's some comparison, but it's certainly a very nice street! It's tree-lined and residential in the main, and runs east and west of Bellenden Road, with a market area at the foot. Chain free.

Peckham Rye Station (Zone 2) is close for main line and Overground trains and there are exciting regeneration and restoration projects going on at and around the station, and on nearby Rye Lane.

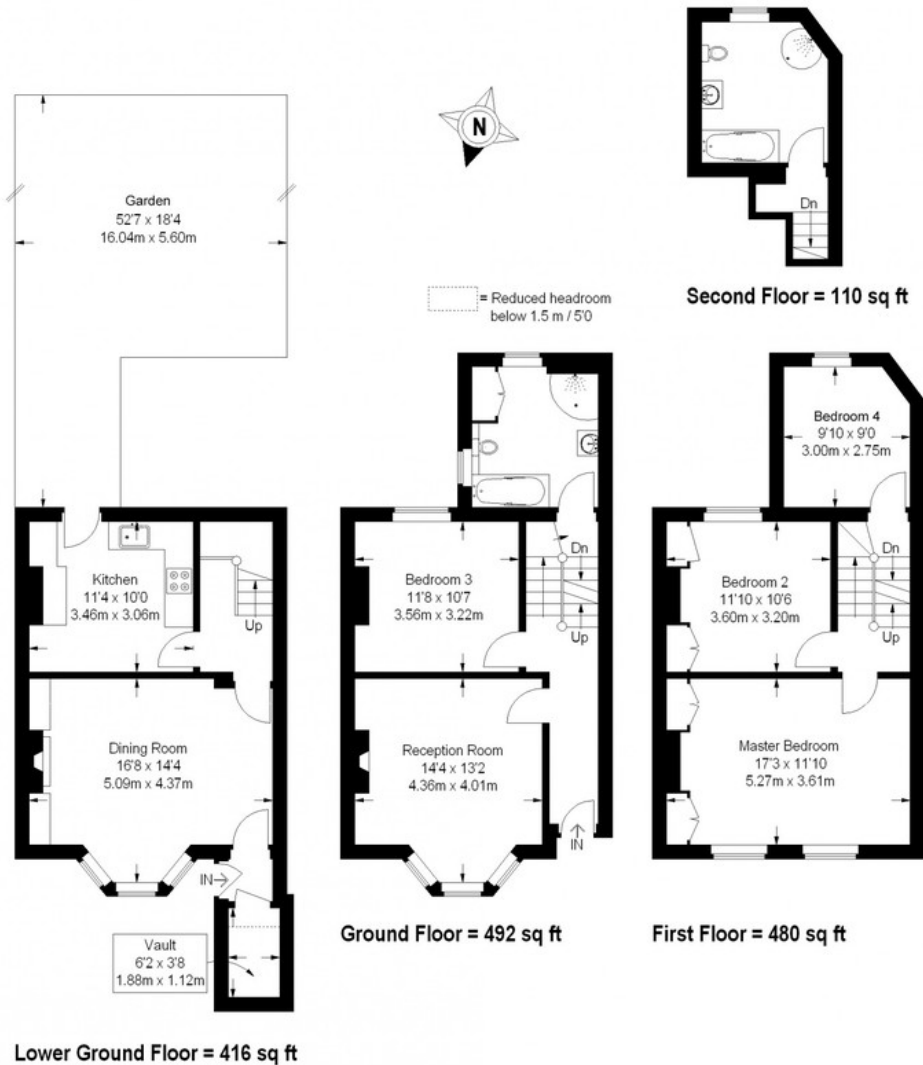
MUNDAY'S



Munday's Estate Agents Ltd.
2 Mary Boast Walk
London SE5 8SP
020 3318 8900

www.mundays.com

Choumert Road



Approximate Gross Internal Area
 Lower Ground Floor = 416 sq ft / 38.7 sq m
 Ground Floor = 492 sq ft / 45.7 sq m
 First Floor = 480 sq ft / 44.6 sq m
 Second Floor = 110 sq ft / 10.2 sq m
 Vault = 23 sq ft / 2.1 sq m
 Total = 1521 sq ft / 141.3 sq m

This plan is for layout guidance only. Not drawn to scale unless stated. Windows and door openings are approximate. Whilst every care is taken in the preparation of this plan, please check all dimensions, shapes and compass bearings before making any decisions reliant upon them. (ID274421)

Matt Gamble *mg*
 PHOTOGRAPHY