

MUNDAY'S

Choumert Road, Peckham Rye

£2,250,000



Beautiful semi-detached Victorian house of over 2000 square feet. Built circa 1860, your new head-turning, palm-tree fronted home has been extended both out and up to deliver an impressive and generous family or entertaining-friendly luxury dwelling.

Laid out over four floors are four bedrooms, two bathrooms, a downstairs w.c./utility, four reception rooms(!), a large kitchen, and a study. The house has two entrances at upper and lower ground levels, and a walled south-facing 40 foot garden, which is accessed via doors from the smartest of dining rooms. Gated off-street parking on the deep front drive is the clincher.

Munday's Estate Agents Ltd.
2 Mary Boast Walk
London SE5 8SP
020 3318 8900

www.mundays.com

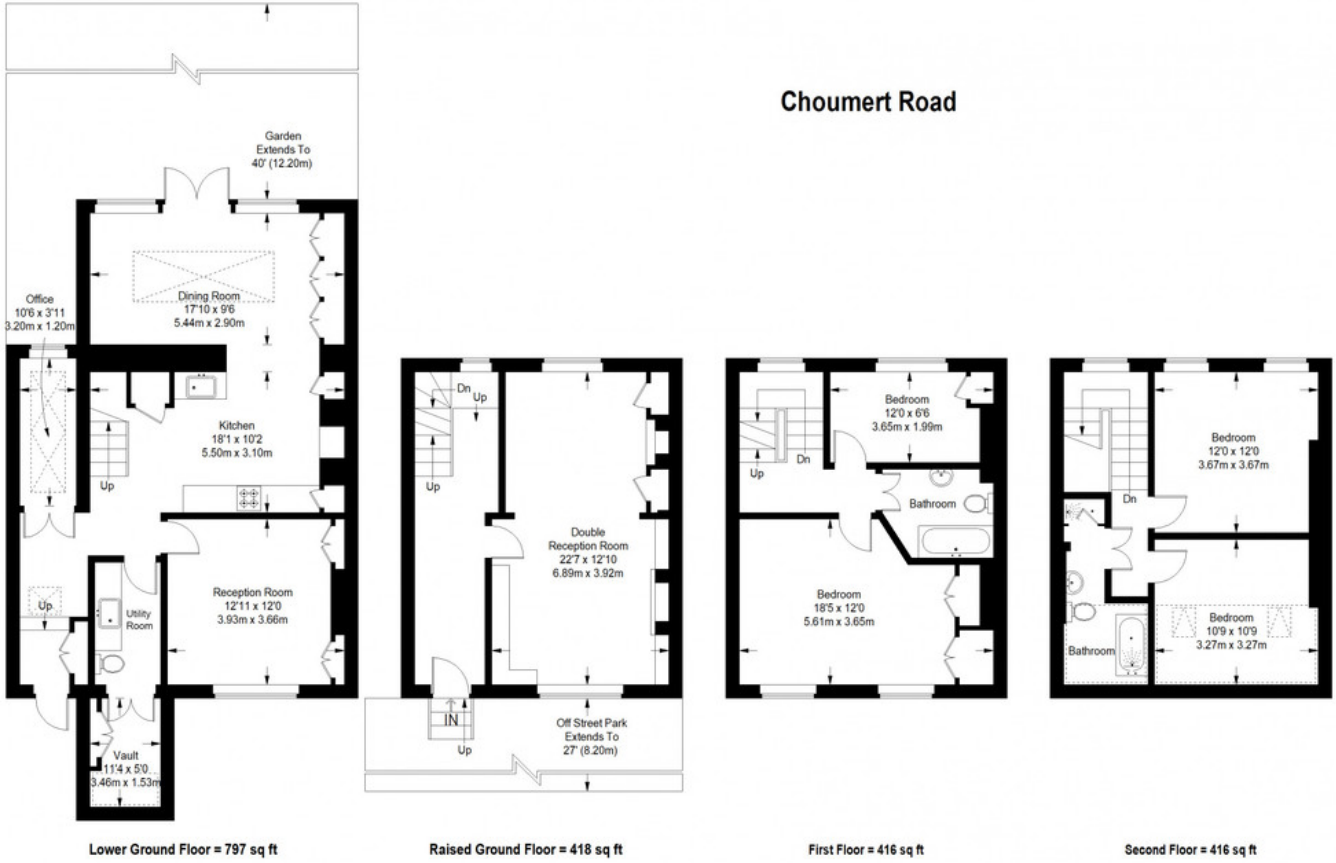
MUNDAY'S



Munday's Estate Agents Ltd.
2 Mary Boast Walk
London SE5 8SP
020 3318 8900

www.mundays.com

Choumert Road



Approximate Gross Internal Area
 LOWER GROUND FLOOR = 797 sq ft / 74.04 sq m
 RAISED GROUND FLOOR = 418 sq ft / 38.83 sq m
 FIRST FLOOR = 416 sq ft / 38.65 sq m
 SECOND FLOOR = 416 sq ft / 38.65 sq m
 Total = 2047 sq ft / 190.17 sq m

This plan is for layout guidance only. Not drawn to scale unless stated. Windows and door openings are approximate. Whilst every care is taken in the preparation of this plan, please check all dimensions, shapes and compass bearings before making any decisions reliant upon them. (ID357409)