

MUNDAY'S

Choumert Road, Peckham Rye

£850,000



Smart two bedroom apartment with a generous private garden and good storage. The property is set over the two lower floors of a tall Victorian townhouse. There is just one flat above you.

The location's just lovely - you are on one of Peckham's principal streets, just off Bellenden Road, and a few minutes from Warwick Gardens. Walk just three minutes for regular and Windrush line services, at Peckham Rye Station (Fare Zone 2).

*Munday's Estate Agents Ltd.*  
2 Mary Boast Walk  
London SE5 8SP  
020 3318 8900

[www.mundays.com](http://www.mundays.com)

MUNDAY'S

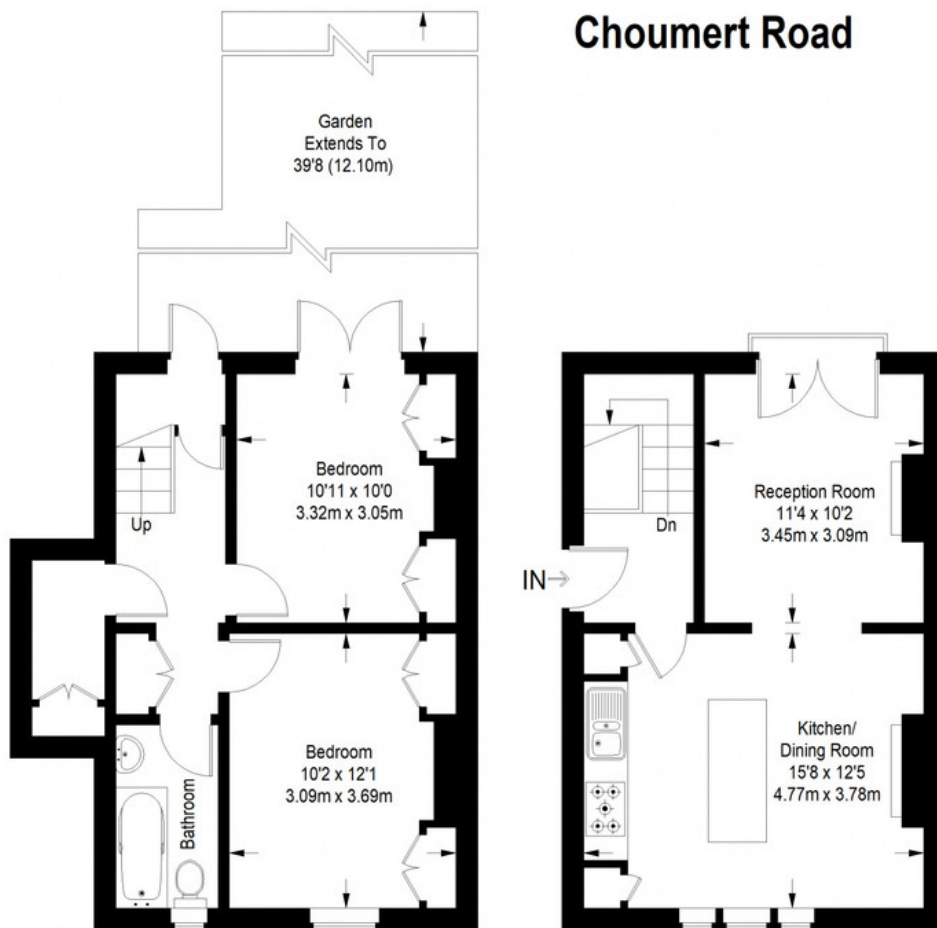


*Munday's Estate Agents Ltd.*  
2 Mary Boast Walk  
London SE5 8SP  
020 3318 8900

[www.mundays.com](http://www.mundays.com)



## Choumert Road



Lower Ground Floor = 400 sq ft

Ground Floor = 371 sq ft

Approximate Gross Internal Area  
 LOWER GROUND FLOOR = 400 sq ft / 37.16 sq m  
 GROUND FLOOR = 371 sq ft / 34.47 sq m  
 Total = 771 sq ft / 71.63 sq m



This plan is for layout guidance only. Not drawn to scale unless stated. Windows and door openings are approximate. Whilst every care is taken in the preparation of this plan, please check all dimensions, shapes and compass bearings before making any decisions reliant upon them. (ID357409)