

MUNDAY'S

Choumert Road, Peckham Rye

£899,950



Charming Victorian two bed terraced half-house with pleasing features aplenty - including crisp white walls and old school style radiators, on a popular tree-lined residential street that is close to Bellenden Road and Peckham Rye Station (just one and four minutes by foot respectively).

Sitting just on the border of Holly Grove Conservation Area, the house is set over three floors - delivering a double bedroom (one on each upper floor), and an immaculate, oversized bathroom, plus a large open-plan and dual-aspect reception/kitchen/dining room.

A smart and low-maintenance garden completes matters, sitting at the rear of the house (accessed directly off the kitchen area, via French doors).

Munday's Estate Agents Ltd.
2 Mary Boast Walk
London SE5 8SP
020 3318 8900

www.mundays.com

MUNDAY'S

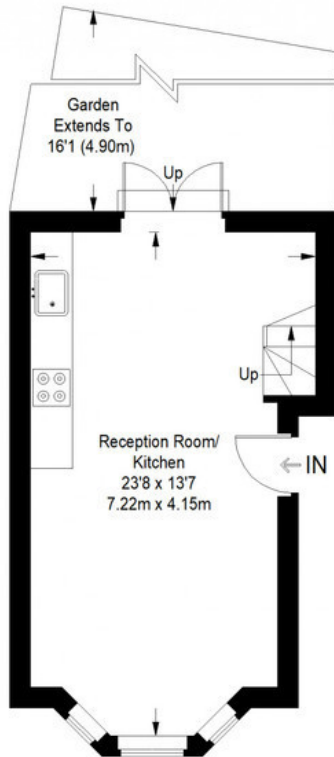


Munday's Estate Agents Ltd.
2 Mary Boast Walk
London SE5 8SP
020 3318 8900

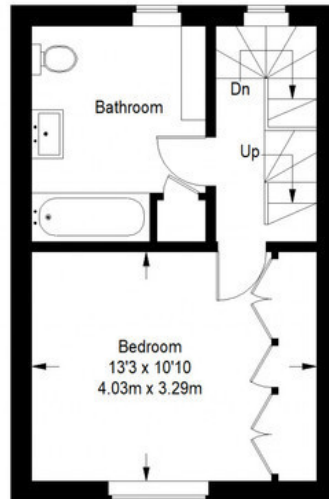
www.mundays.com

MUNDAY'S

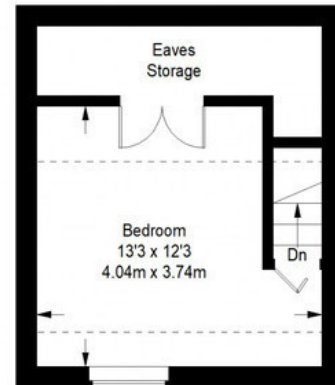
Choumert Road




Ground Floor = 284 sq ft



First Floor = 289 sq ft



Second Floor = 160 sq ft

 = Reduced headroom below 1.5 m / 5'0

Approximate Gross Internal Area
 GROUND FLOOR = 284 sq ft / 26.38 sq m
 FIRST FLOOR = 289 sq ft / 26.85 sq m
 SECOND FLOOR (Excluding Eaves Storage) = 160 sq ft / 14.86 sq m
 Total = 733 sq ft / 68.10 sq m



This plan is for layout guidance only. Not drawn to scale unless stated. Windows and door openings are approximate. Whilst every care is taken in the preparation of this plan, please check all dimensions, shapes and compass bearings before making any decisions reliant upon them. (ID357409)

Munday's Estate Agents Ltd.
 2 Mary Boast Walk
 London SE5 8SP
 020 3318 8900

www.mundays.com