

MUNDAY'S

Choumert Road, Peckham Rye

£1,495,000



Lovely, light and large Victorian bay-fronted terrace on an always-requested street, mere minutes from Bellenden Road (three!) and Peckham Rye Station (eight); Fare Zone 2 and on the Overground network/Windrush line. Permit-parking is on-street.

Beyond popular 'Posh Peckham', you are also close to the centres of East Dulwich and Camberwell. East Dulwich Station is at your feet within 12 minutes, and Denmark Hill Station is yours in 15.

Munday's Estate Agents Ltd.
2 Mary Boast Walk
London SE5 8SP
020 3318 8900

www.mundays.com

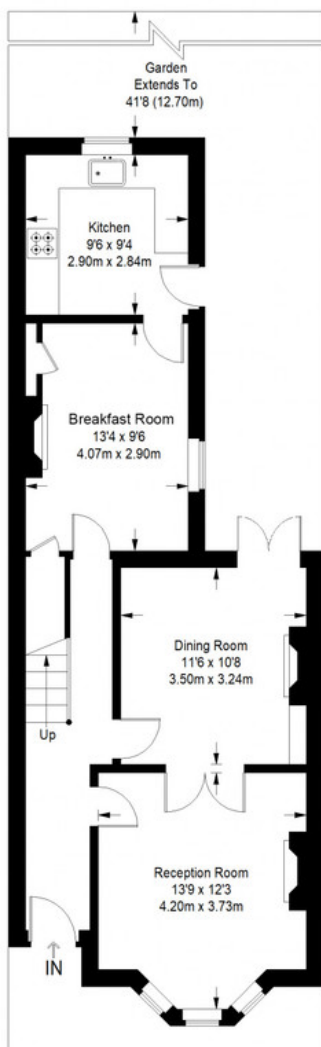
MUNDAY'S



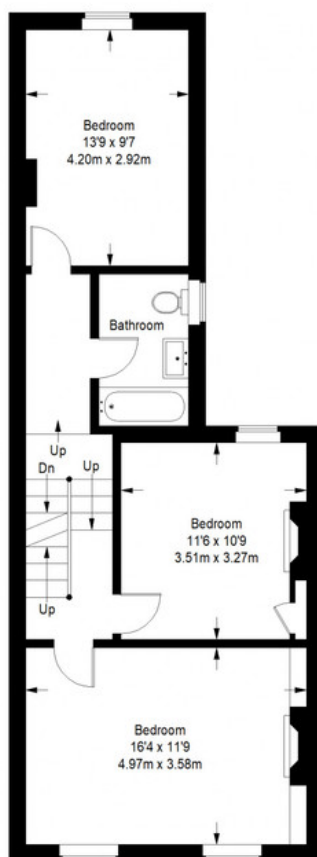
Munday's Estate Agents Ltd.
2 Mary Boast Walk
London SE5 8SP
020 3318 8900

www.mundays.com

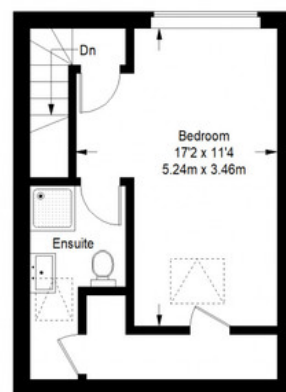
Choumert Road



Ground Floor = 620 sq ft



First Floor = 614 sq ft



Second Floor = 296 sq ft

Approximate Gross Internal Area
 GROUND FLOOR = 620 sq ft / 57.60 sq m
 FIRST FLOOR = 614 sq ft / 57.04 sq m
 SECOND FLOOR = 296 sq ft / 27.50 sq m
 Total = 1530 sq ft / 142.14 sq m



This plan is for layout guidance only. Not drawn to scale unless stated. Windows and door openings are approximate. Whilst every care is taken in the preparation of this plan, please check all dimensions, shapes and compass bearings before making any decisions reliant upon them. (ID357409)