

MUNDAY'S

Choumert Road, Peckham Rye

£635,000



Well-placed and chain-free ground floor shop unit (A1/A2, with front shuttered access) plus double-glazed one bedroom flat set over the building's first and second floors - with a separate entrance. The building measures in at 832 square feet.

You are just a few minutes from Rye Lane, Bellenden Road, and Peckham Rye Station.

*Munday's Estate Agents Ltd.*  
2 Mary Boast Walk  
London SE5 8SP  
020 3318 8900

[www.mundays.com](http://www.mundays.com)

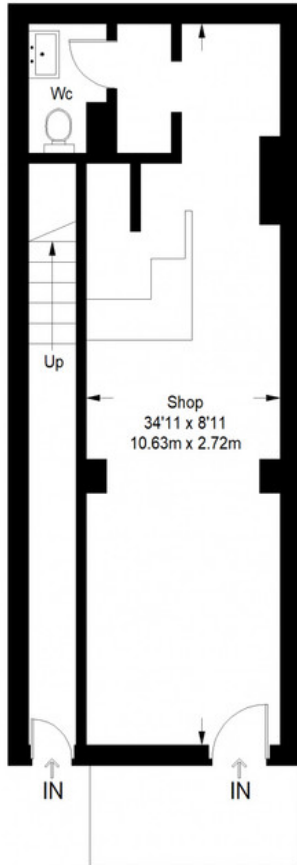
MUNDAY'S



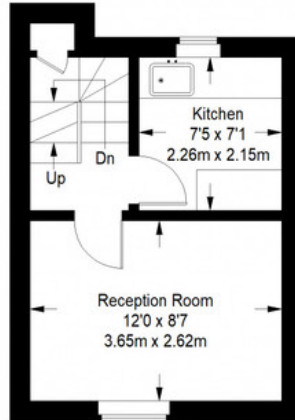
*Munday's Estate Agents Ltd.*  
2 Mary Boast Walk  
London SE5 8SP  
020 3318 8900

[www.mundays.com](http://www.mundays.com)

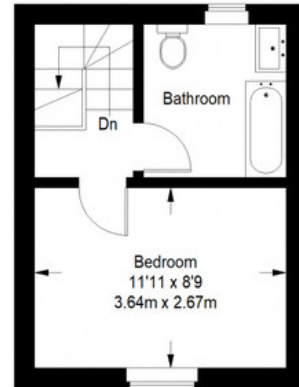
## Choumert Road



Ground Floor = 426 sq ft



First Floor = 205 sq ft



Second Floor = 201 sq ft

Approximate Gross Internal Area  
 GROUND FLOOR = 426 sq ft / 39.58 sq m  
 FIRST FLOOR = 205 sq ft / 19.04 sq m  
 SECOND FLOOR = 201 sq ft / 18.67 sq m  
 Total = 832 sq ft / 77.29 sq m



This plan is for layout guidance only. Not drawn to scale unless stated. Windows and door openings are approximate. Whilst every care is taken in the preparation of this plan, please check all dimensions, shapes and compass bearings before making any decisions reliant upon them. (ID357409)