

Cheltenham Road, Nunhead

£475,000



Recently-decorated two double bedroom first floor Victorian pad with a Freehold-share, a private SW-facing roof terrace (directly accessed from bedroom two) and its own front door, set within an attractive brick-built terrace which used to have a shop at ground floor level (now a flat). Chain free.

Find your new pad blissfully-close to the southerly end of Peckham Rye Park and Common, on the Nunhead side near Aquarius Golf Course (a cute community-run one).

Your local stations are Nunhead, Peckham Rye and Brockley - all around a mile from the house and Fare Zone 2.

Your local pubs include The Ivy House, The Angel Oak and The Waverley, and The Clockhouse and The Herne on the other side of the park.

MUNDAY'S

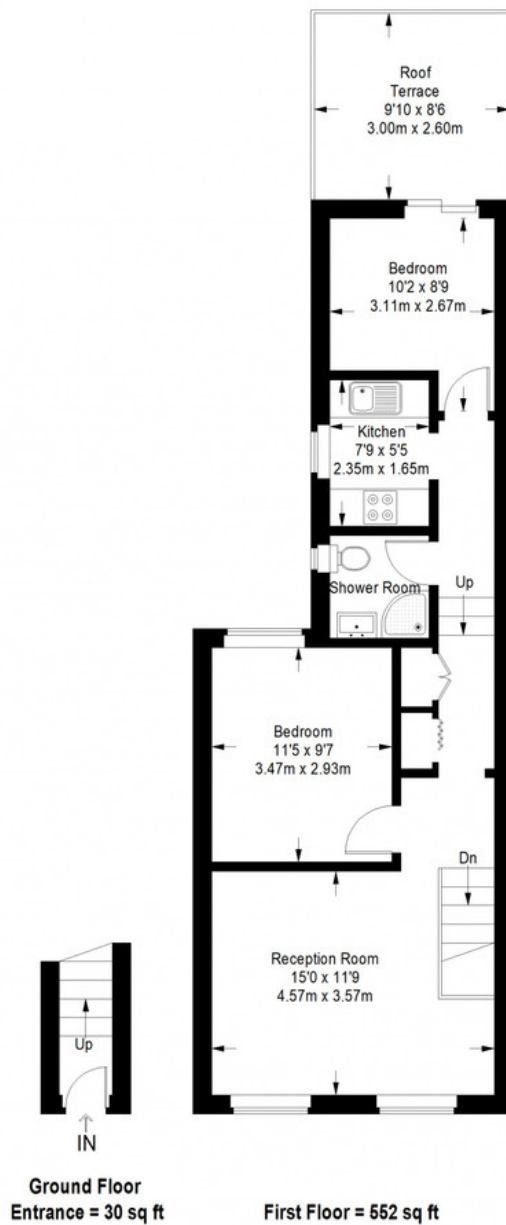


Munday's Estate Agents Ltd.
2 Mary Boast Walk
London SE5 8SP
020 3318 8900

www.mundays.com

MUNDAY'S

Cheltenham Road



Approximate Gross Internal Area
GROUND FLOOR ENTRANCE = 30 sq ft / 2.79 sq m
FIRST FLOOR = 552 sq ft / 51.28 sq m
Total = 582 sq ft / 54.07 sq m



This plan is for layout guidance only. Not drawn to scale unless stated. Windows and door openings are approximate. Whilst every care is taken in the preparation of this plan, please check all dimensions, shapes and compass bearings before making any decisions reliant upon them. (ID357409)

Munday's Estate Agents Ltd.
2 Mary Boast Walk
London SE5 8SP
020 3318 8900

www.mundays.com