

MUNDAY'S

Camplin Street, New Cross

£865,000



Chain free three bedroom bay-fronted end of terrace Victorian house with a stylish decorative treatment, an enormous basement, and a mature garden of circa 40 feet (with gated street access).

The location is a popular residential street within Hatcham Conservation Area. You are an easy 10 minute stroll from New Cross Gate Station, and a few minutes from a brilliant primary school: Hatcham Primary (with a traditional Victorian school building with impressive architectural upgrade by jestico + whites).

Munday's Estate Agents Ltd.
2 Mary Boast Walk
London SE5 8SP
020 3318 8900

www.mundays.com

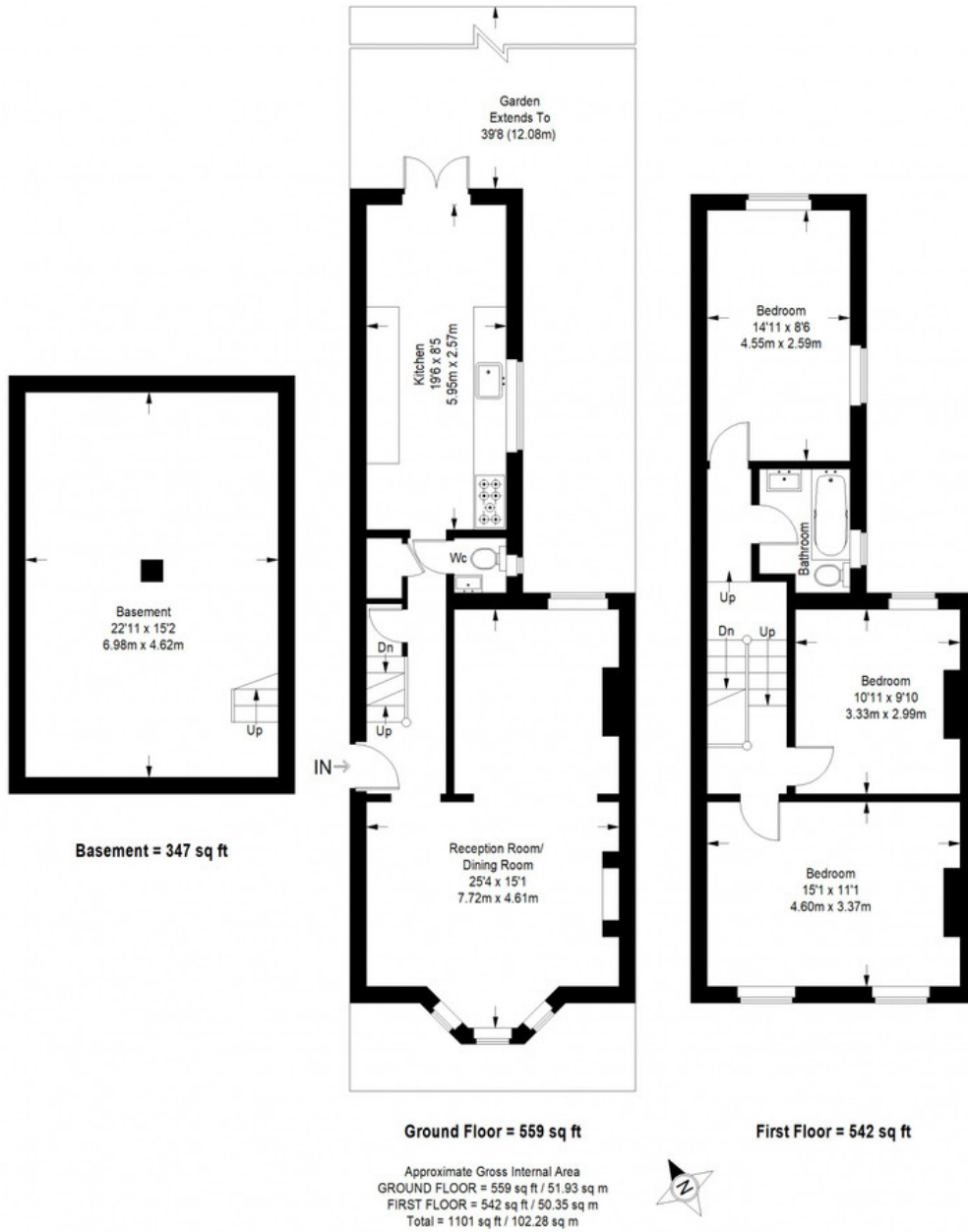
MUNDAY'S



Munday's Estate Agents Ltd.
2 Mary Boast Walk
London SE5 8SP
020 3318 8900

www.mundays.com

Camplin Street



This plan is for layout guidance only. Not drawn to scale unless stated. Windows and door openings are approximate. Whilst every care is taken in the preparation of this plan, please check all dimensions, shapes and compass bearings before making any decisions reliant upon them. (ID357409)