

MUNDAY'S

Camberwell Road, Camberwell

£375,000



Victorian one bed flat of 527 square feet, with stripped floors, big windows and high ceilings, set on first floor level and with a useful store room too, close to central Camberwell and its Green.

Bus travel is seriously easy here (and you can hop on a bus up to Oval for the tube) and Denmark Hill Station is just a 15 minute walk, up pretty Grove Lane.

Munday's Estate Agents Ltd.
2 Mary Boast Walk
London SE5 8SP
020 3318 8900

www.mundays.com

MUNDAY'S

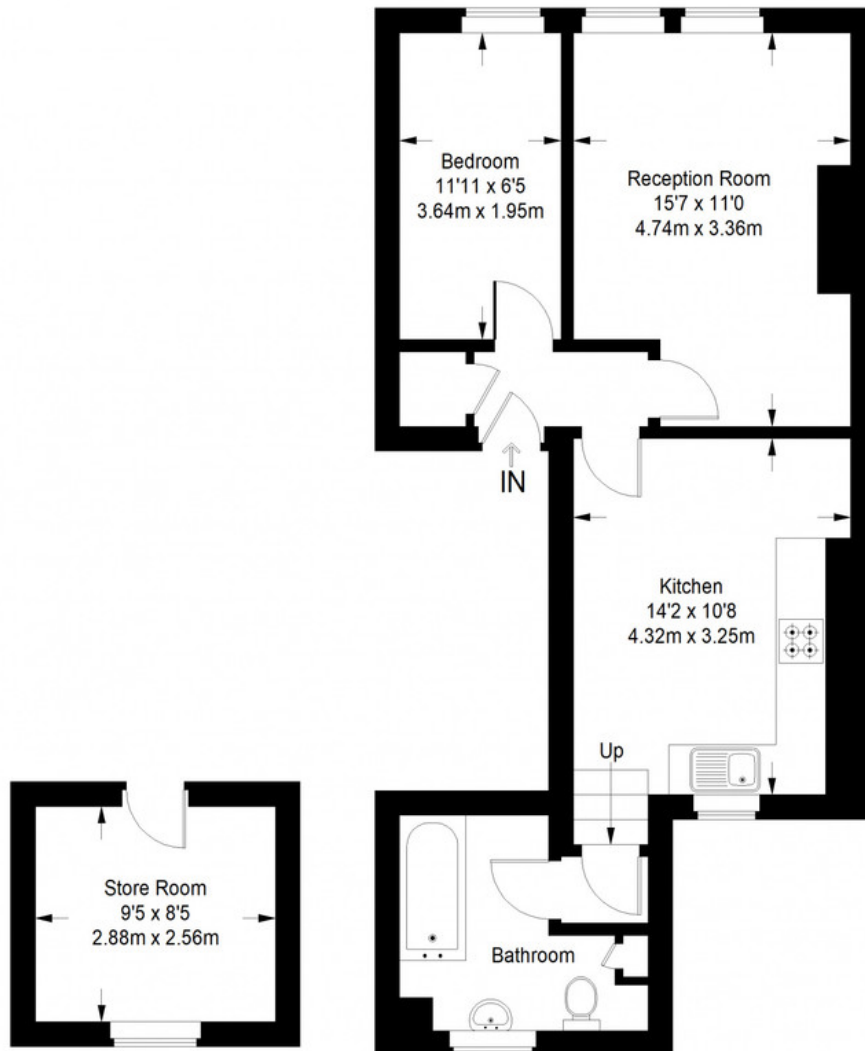


Munday's Estate Agents Ltd.
2 Mary Boast Walk
London SE5 8SP
020 3318 8900

www.mundays.com

MUNDAY'S

Camberwell Road



First Floor

First Floor = 527 sq ft

Approximate Gross Internal Area
FIRST FLOOR = 527 sq ft / 48.96 sq m
Total = 527 sq ft / 48.96 sq m



This plan is for layout guidance only. Not drawn to scale unless stated. Windows and door openings are approximate. Whilst every care is taken in the preparation of this plan, please check all dimensions, shapes and compass bearings before making any decisions reliant upon them. (ID357409)

Munday's Estate Agents Ltd.
2 Mary Boast Walk
London SE5 8SP
020 3318 8900

www.mundays.com