

MUNDAY'S

Camberwell Grove, Camberwell

£825,000



Large, light and well-appointed two double bedroom second floor apartment with beautiful treetop vistas, a generous shared garden, and a Freehold-share

You have a dedicated off-street parking space on the smart gravelled front drive.

Delightful Lettsom Gardens is a two minute walk from your door. Denmark Hill Station is also close for Fare Zone 2 regular and Overground trains - walk just seven minutes.

What a spot! Walk to Camberwell in nine minutes, East Dulwich (and its station) in 10, and Peckham's Bellenden Road plus Peckham Rye Station in 15.

Munday's Estate Agents Ltd.
2 Mary Boast Walk
London SE5 8SP
020 3318 8900

www.mundays.com

MUNDAY'S

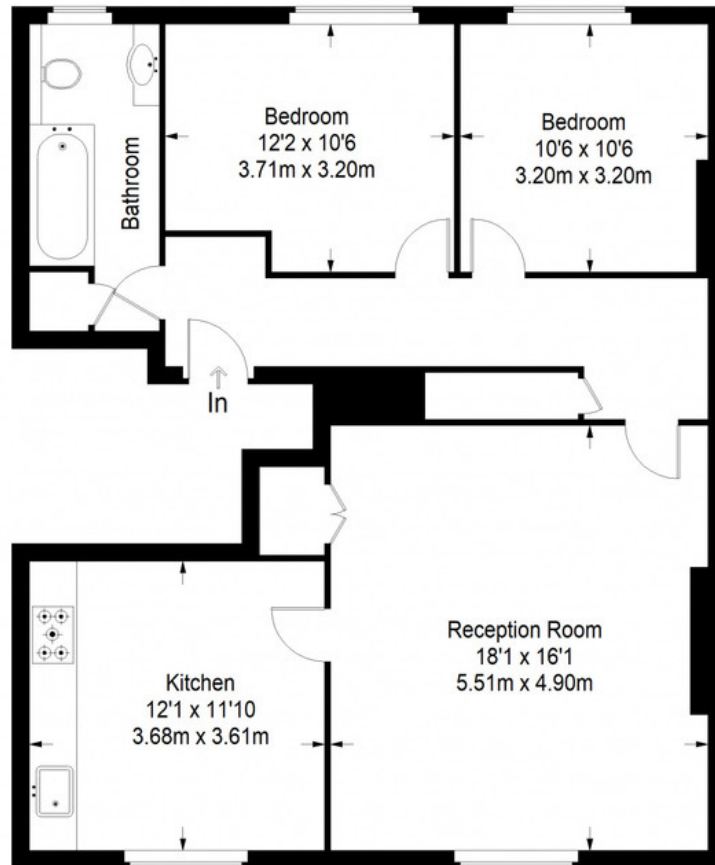


Munday's Estate Agents Ltd.
2 Mary Boast Walk
London SE5 8SP
020 3318 8900

www.mundays.com

MUNDAY'S

Camberwell Grove



Second Floor = 926 sq ft

Approximate Gross Internal Area
SECOND FLOOR = 926 sq ft / 86.05sq m
Total = 926 sq ft / 86.05 sq m



This plan is for layout guidance only. Not drawn to scale unless stated. Windows and door openings are approximate. Whilst every care is taken in the preparation of this plan, please check all dimensions, shapes and compass bearings before making any decisions reliant upon them. (ID357409)

Munday's Estate Agents Ltd.
2 Mary Boast Walk
London SE5 8SP
020 3318 8900

www.mundays.com