

# Camberwell Grove, Camberwell

£825,000



Immaculate two double bed, two bath apartment of 933 square feet, with a Freehold-share, its own front door, off-street parking (first come, first served), and direct access to a large part-walled communal garden. Lettsom Gardens sits behind this - enjoy a very green and leafy yet very connected setting.

Find your new handsome home on high ground, within a row of identical stucco-fronted listed Georgian houses at the top of Camberwell Grove, in Camberwell Grove Conservation Area. It is a grand Regency-style terrace on one of the finest and most well-connected streets south of the river.

Central Camberwell, East Dulwich and Peckham are all within easy walking distance, and Herne Hill and Dulwich are all nearby.

MUNDAY'S

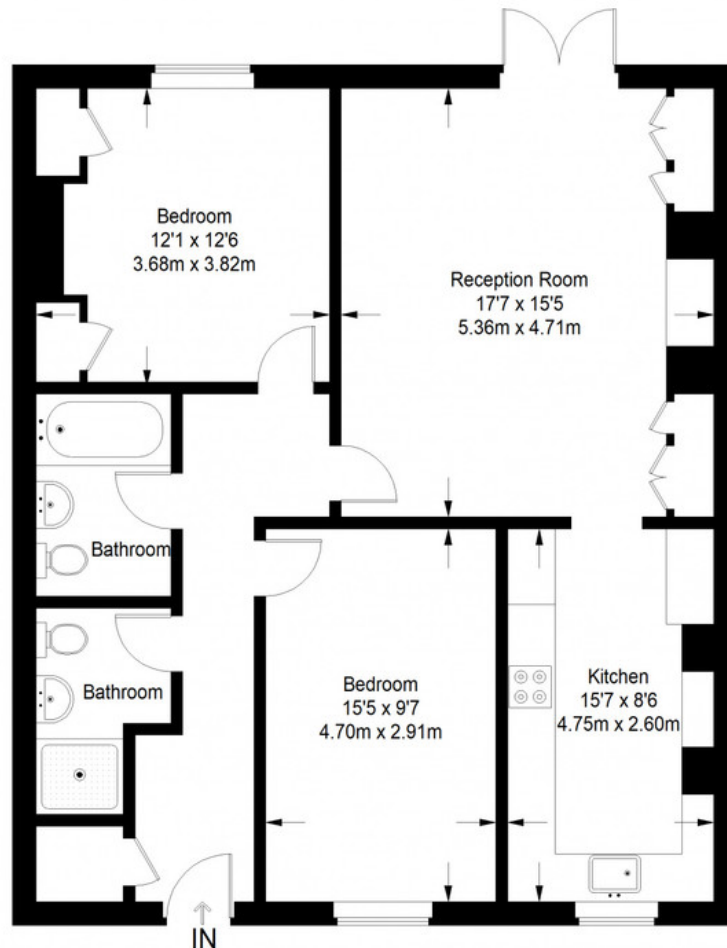


Munday's Estate Agents Ltd.  
2 Mary Boast Walk  
London SE5 8SP  
020 3318 8900

[www.mundays.com](http://www.mundays.com)



## Camberwell Grove



**Lower Ground Floor = 933 sq ft**

Approximate Gross Internal Area  
 LOWER GROUND FLOOR = 933 sq ft / 86.70 sq m  
 Total = 933 sq ft / 86.70 sq m



This plan is for layout guidance only. Not drawn to scale unless stated. Windows and door openings are approximate. Whilst every care is taken in the preparation of this plan, please check all dimensions, shapes and compass bearings before making any decisions reliant upon them. (ID357409)