

MUNDAY'S

Camberwell Grove, Camberwell

£675,000



Classy and bright two double bedroom apartment of 824 square feet, with both bath and shower rooms, generous and well-maintained communal gardens/private grounds, and underground secure allocated parking.

Find the handsome pad on the second floor of The Mary Datchelor School development (architects Rolfe Judd for St. George, 2010). It is a pleasingly-leafy location, within Camberwell Grove Conservation Area.

Walk just eight minutes to Denmark Hill Station, or three to Camberwell Church Street - for shops, restaurants, bars and buses.

Munday's Estate Agents Ltd.
2 Mary Boast Walk
London SE5 8SP
020 3318 8900

www.mundays.com

MUNDAY'S

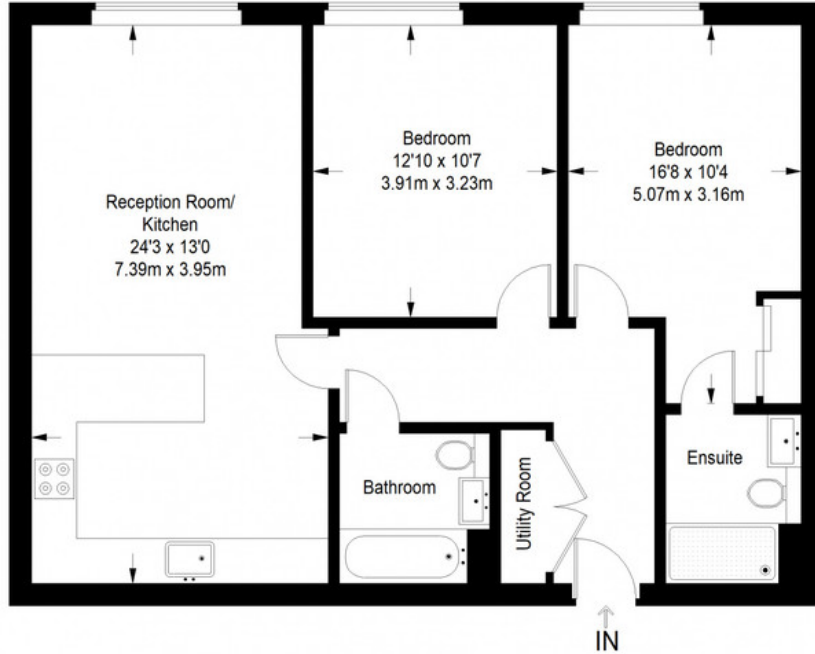


Munday's Estate Agents Ltd.
2 Mary Boast Walk
London SE5 8SP
020 3318 8900

www.mundays.com

MUNDAY'S

Mary Datchelor House



Second Floor = 824 sq ft

Approximate Gross Internal Area
SECOND FLOOR = 824 sq ft / 76.55 sq m
Total = 824 sq ft / 76.55 sq m



This plan is for layout guidance only. Not drawn to scale unless stated. Windows and door openings are approximate. Whilst every care is taken in the preparation of this plan, please check all dimensions, shapes and compass bearings before making any decisions reliant upon them. (ID357409)

Munday's Estate Agents Ltd.
2 Mary Boast Walk
London SE5 8SP
020 3318 8900

www.mundays.com