

## Camberwell Grove, Camberwell

£699,950



Beautiful two bedroom first floor apartment with Freehold-share and high ceilings, within a Grade II listed Georgian gem on one of the area's finest streets.

The property is in immaculate just-move-in condition, and St. Giles Church spire views impress from all the rear rooms.

You are in totally glorious Camberwell Grove Conservation Area heartland here, very close to central Camberwell and Denmark Hill Station (Fare Zone 2). And central Peckham is an easy walk: 15-20 minutes.



MUNDAY'S

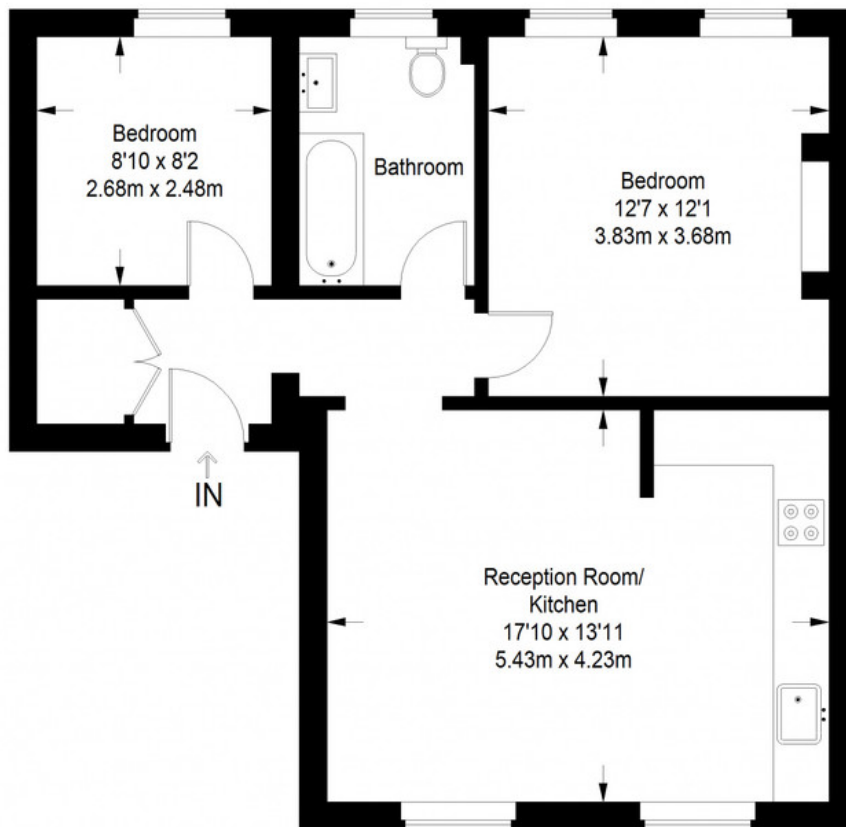


*Munday's Estate Agents Ltd.*  
2 Mary Boast Walk  
London SE5 8SP  
020 3318 8900

[www.mundays.com](http://www.mundays.com)

**MUNDAY'S**

## Camberwell Grove



**First Floor = 631 sq ft**

Approximate Gross Internal Area  
FIRST FLOOR = 631 sq ft / 58.62 sq m  
Total = 631 sq ft / 58.62 sq m



This plan is for layout guidance only. Not drawn to scale unless stated. Windows and door openings are approximate. Whilst every care is taken in the preparation of this plan, please check all dimensions, shapes and compass bearings before making any decisions reliant upon them. (ID357409)

*Munday's Estate Agents Ltd.*  
2 Mary Boast Walk  
London SE5 8SP  
020 3318 8900

[www.mundays.com](http://www.mundays.com)