

MUNDAY'S

Bushey Hill Road, Camberwell

£1,495,000



Flexible five bed, three bath Victorian terraced townhouse of 1775 square feet over three floors and with two entrances. A well-established, landscaped rear garden of ~37 feet on two levels seals the deal.

Your handsome new home has loads of pleasing features: like stained glass detailing, wooden floors, sash windows, high ceilings, thoughtful built-in storage, column radiators, and two pairs of hearthed period fireplaces (find these on the lower ground and raised ground floors).

Where is it? Bushey Hill Road is one of the desirable oft-requested 'Lyndhurst toast rack' streets, in popular Camberwell/Peckham Rye borderland. Walk just 12 minutes to either Denmark Hill Station or Peckham Rye Station. Both are Fare Zone 2, with regular rail and Windrush line services.

Munday's Estate Agents Ltd.
2 Mary Boast Walk
London SE5 8SP
020 3318 8900

www.mundays.com

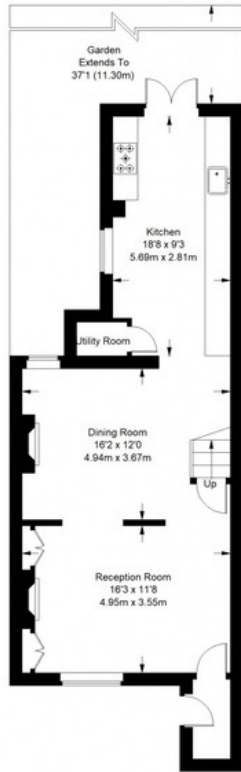
MUNDAY'S



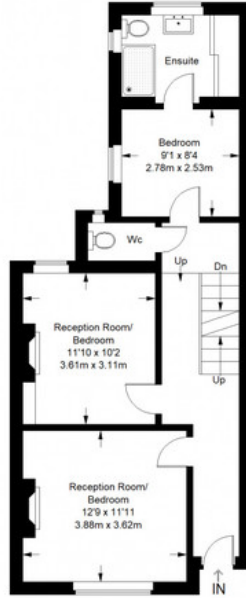
Munday's Estate Agents Ltd.
2 Mary Boast Walk
London SE5 8SP
020 3318 8900

www.mundays.com

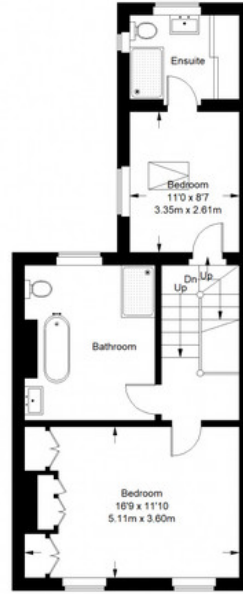
Bushey Hill Road



Lower Ground Floor = 602 sq ft



Raised Ground Floor = 597 sq ft



First Floor = 576 sq ft

Approximate Gross Internal Area
 LOWER GROUND FLOOR = 602 sq ft / 55.93 sq m
 RAISED GROUND FLOOR = 597 sq ft / 55.46 sq m
 FIRST FLOOR = 576 sq ft / 53.51 sq m
 Total = 1775 sq ft / 164.90 sq m



This plan is for layout guidance only. Not drawn to scale unless stated. Windows and door openings are approximate. Whilst every care is taken in the preparation of this plan, please check all dimensions, shapes and compass bearings before making any decisions reliant upon them. (ID357409)