

Bushey Hill Road, Camberwell

£675,000



Seriously lovely two double bedroom period apartment with a super layout, a private south-west facing garden, a long lease, and its own front door.

Find it within a huge and handsome Victorian house at the top/southerly end of one of the long, leafy, desirable streets which make up the 'Lyndhurst toast-rack'. Your new cool and classy conversion takes the entire ground floor, with garden access from both the kitchen and the master bedroom. Nice!

Peckham Rye Station is your closest one (just eight minutes on foot). Denmark Hill Station isn't much further (10 minutes). Both offer regular rail plus Windrush line services. Bellenden Road is your local high street area. The town centres of Camberwell and Peckham are both really close for buses, an impressive range of places to eat, drink, and things to do. Permit-parking is on-street.

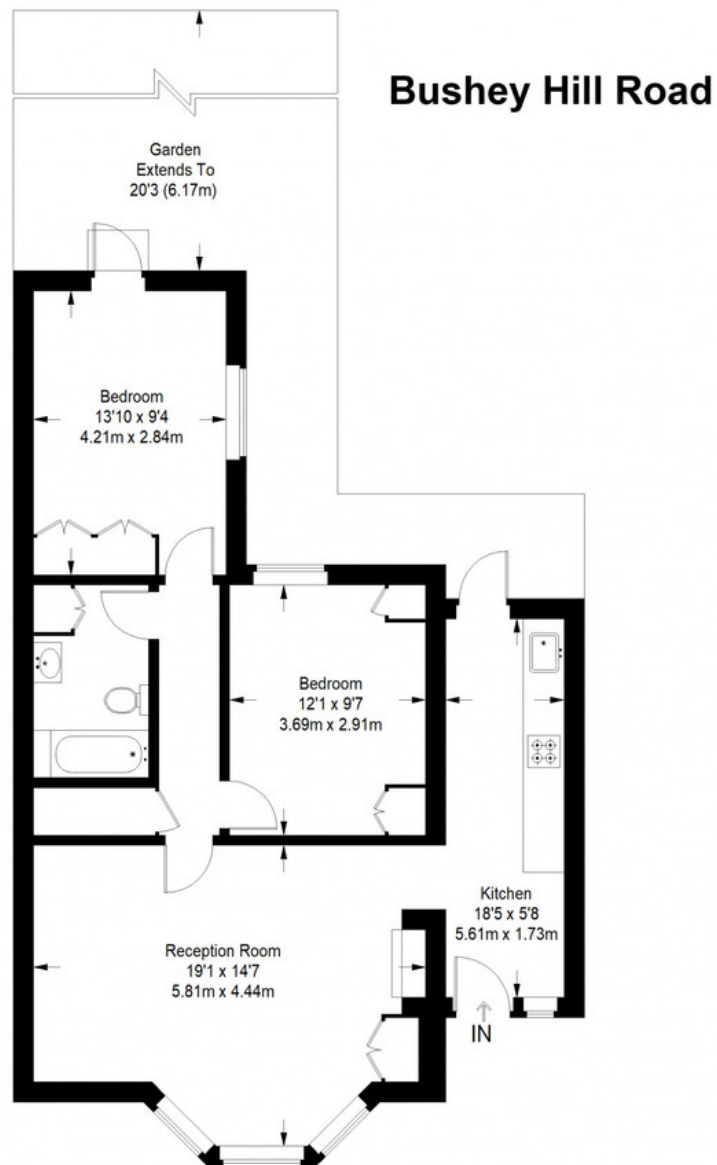
MUNDAY'S



*Munday's Estate Agents Ltd.*  
2 Mary Boast Walk  
London SE5 8SP  
020 3318 8900

[www.mundays.com](http://www.mundays.com)

# MUNDAY'S



**Lower Ground Floor = 742 sq ft**

Approximate Gross Internal Area  
LOWER GROUND FLOOR = 742 sq ft / 69sq m  
Total = 742 sq ft / 69sq m



This plan is for layout guidance only. Not drawn to scale unless stated. Windows and door openings are approximate. Whilst every care is taken in the preparation of this plan, please check all dimensions, shapes and compass bearings before making any decisions reliant upon them. (ID357409)

*Munday's Estate Agents Ltd.*  
2 Mary Boast Walk  
London SE5 8SP  
020 3318 8900

[www.mundays.com](http://www.mundays.com)