

MUNDAY'S

Bushey Hill Road, Camberwell

£1,650,000



Large, light and oh so lovely bay-fronted five bed, three bath Victorian house delivered over three floors and circa 1850 square feet (excluding the handy cellar). The cherry on top is a walled and low-maintenance west-facing 'city' garden (complete with outhouse with plumbing and electricity).

The pleasing setting is a quiet, tree-lined 'Lyndhurst toast-rack' street near The Villa Nursery (popular state primaries are The Belham and Lyndhurst), located between Peckham Rye and Denmark Hill station (walk to these in 10 and 13 minutes respectively), and Camberwell and Peckham's town centres. Enjoy what both have to offer, plus excellent bus connections from nearby Peckham Road at the foot of your road.

Munday's Estate Agents Ltd.
2 Mary Boast Walk
London SE5 8SP
020 3318 8900

www.mundays.com

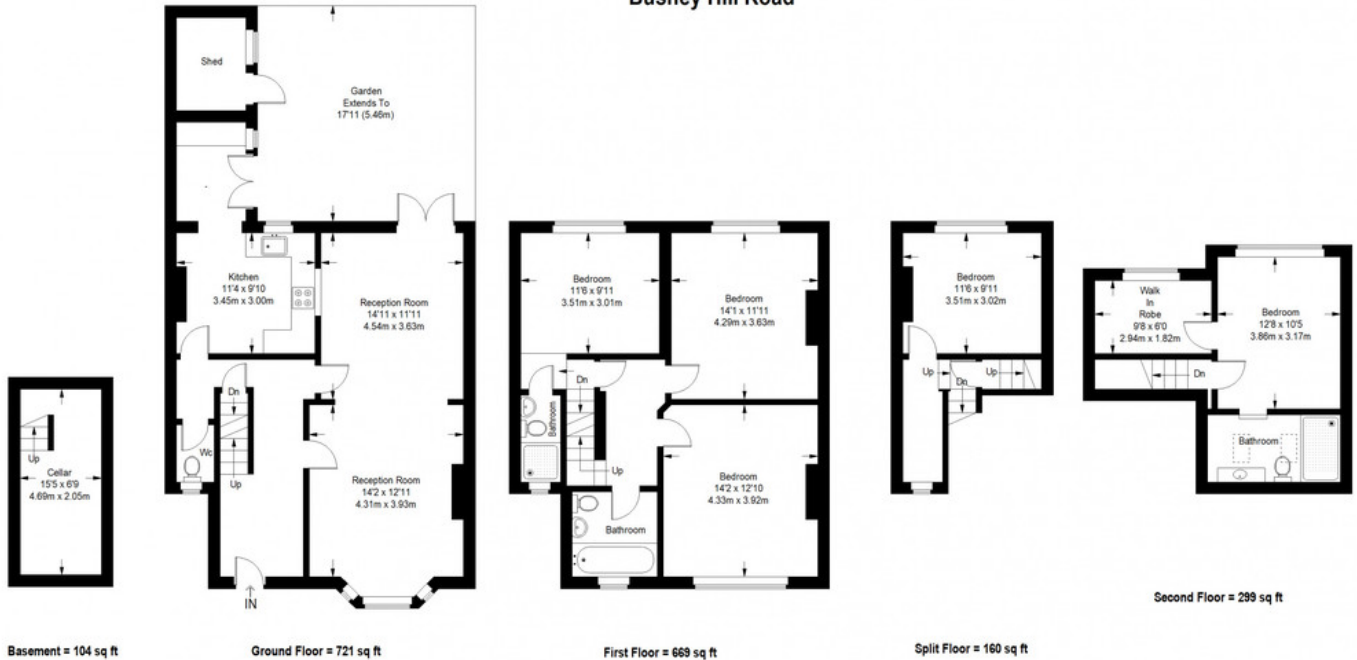
MUNDAY'S



Munday's Estate Agents Ltd.
2 Mary Boast Walk
London SE5 8SP
020 3318 8900

www.mundays.com

Bushey Hill Road



Approximate Gross Internal Area
 GROUND FLOOR = 721 sq ft / 66.98 sq m
 FIRST FLOOR = 669 sq ft / 62.15 sq m
 SPLIT FLOOR = 160 sq ft / 14.86 sq m
 SECOND FLOOR = 299 sq ft / 27.78 sq m
 Total = 1849 sq ft / 171.77 sq m



This plan is for layout guidance only. Not drawn to scale unless stated. Windows and door openings are approximate. Whilst every care is taken in the preparation of this plan, please check all dimensions, shapes and compass bearings before making any decisions reliant upon them. (IC357409)