

Bushey Hill Road, Camberwell

£1,320,000



Handsome designer-owned double-bay-fronted four bed terrace of 1745 square feet, with a sunny 'city' garden - accessed via French doors from the large rear reception/garden room.

This Edwardian red-brick house is offered to the market without a chain.

This is one of our favourite streets in the area. It's lined with mature trees and varied-period housing stock, and is set between Peckham Rye and Denmark Hill stations (walk to either in circa 10 minutes).

It's a 'Lyndhurst toast-rack' street, running south from The South London Gallery, and north from Lyndhurst Grove - where you'll find The Villa Nursery and Pre-Prep. School.

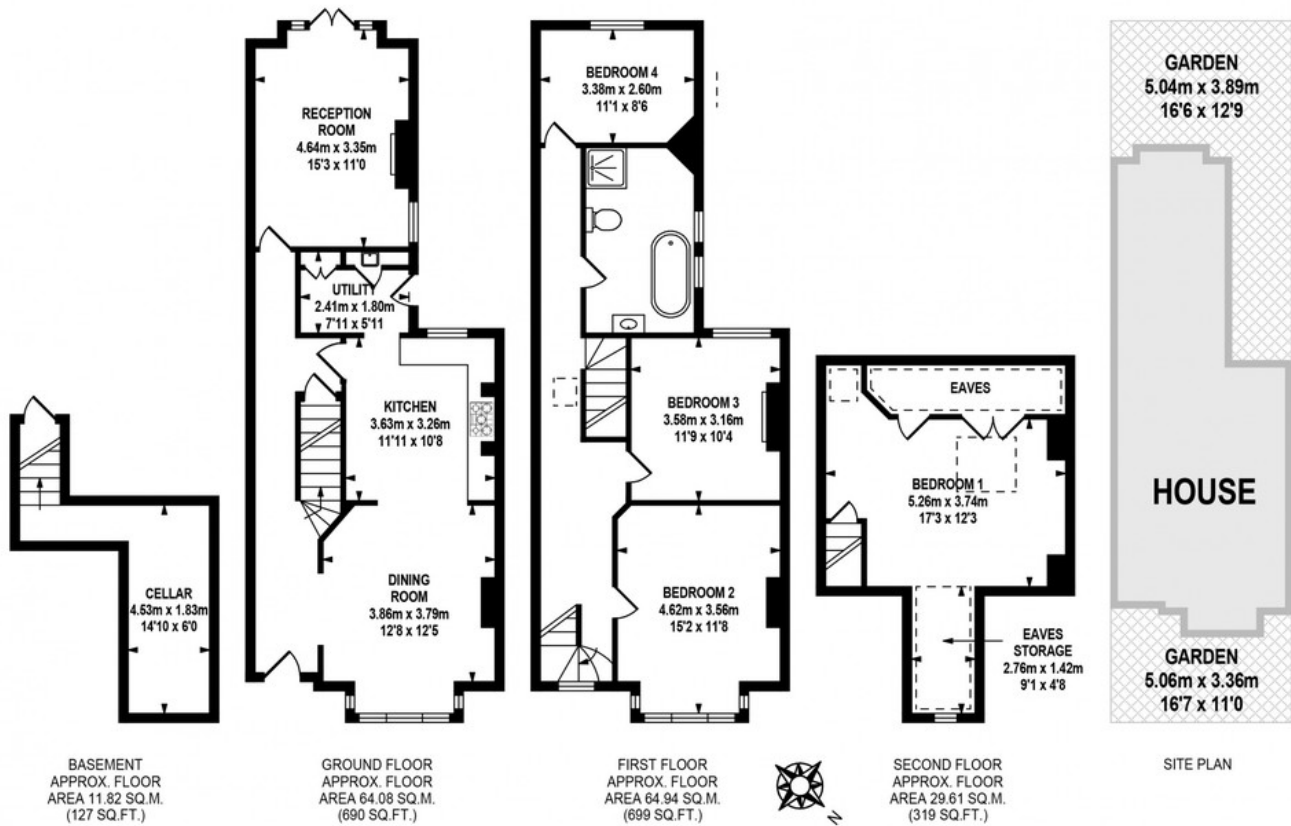


MUNDAY'S



*Munday's Estate Agents Ltd.*  
2 Mary Boast Walk  
London SE5 8SP  
020 3318 8900

[www.mundays.com](http://www.mundays.com)



TOTAL APPROX. FLOOR AREA 170.45 SQ.M. (1835 SQ.FT.)

Whilst every effort is made to accurately reproduce these floor plans, measurements are approximate, not to scale and for illustrative purposes only.  
Dulwich Energy Assessors Ltd with © London Living www.london-living.com