

MUNDAY'S

Burnt Ash Road, Lee

£450,000



Delightful two bedroom ground floor maisonette of 720 square feet, with a wide and oversized sunny east-facing garden (to which you have direct access). The property is double-glazed.

Your new home - and substantial garden - is just a seven minute walk from Lee Station, and 15 from Hither Green Station. There are lots of good bus routes as well.

Munday's Estate Agents Ltd.
2 Mary Boast Walk
London SE5 8SP
020 3318 8900

www.mundays.com

MUNDAY'S

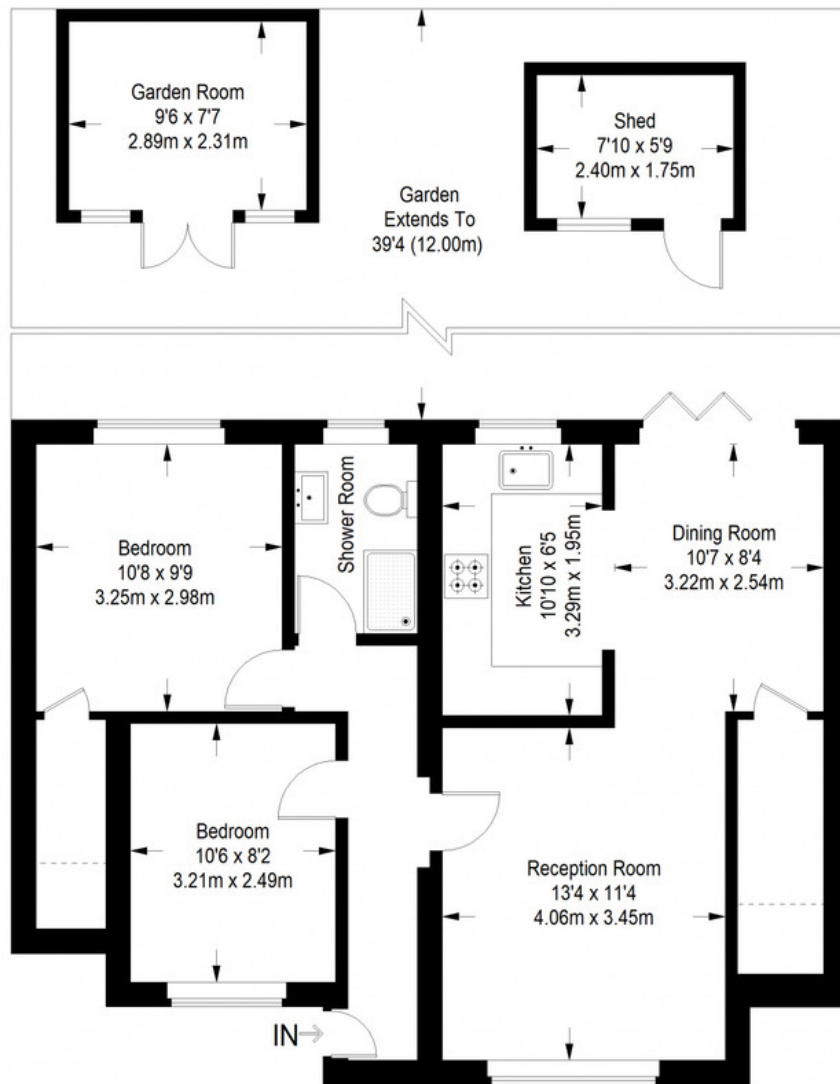


Munday's Estate Agents Ltd.
2 Mary Boast Walk
London SE5 8SP
020 3318 8900

www.mundays.com

MUNDAY'S

Burnt Ash Road



Ground Floor = 720 sq ft

Approximate Gross Internal Area
GROUND FLOOR = 720 sq ft / 66.89 sq m
Total = 720 sq ft / 66.89 sq m



This plan is for layout guidance only. Not drawn to scale unless stated. Windows and door openings are approximate. Whilst every care is taken in the preparation of this plan, please check all dimensions, shapes and compass bearings before making any decisions reliant upon them. (ID357409)

Munday's Estate Agents Ltd.
2 Mary Boast Walk
London SE5 8SP
020 3318 8900

www.mundays.com