

Buchan Road, Nunhead

£950,000



Comfortable four bedroom Victorian terraced house of 1221 square feet, incorporating a converted loft suite, and an extension to the ground floor also. Potential remains to extend over the side-return space - should you so desire this as a future project. Parking is currently unrestricted on the street.

A lush rear garden stretching 50 feet (facing north-west: enjoy afternoon sun) completes the pretty package. We love the pergola/entertaining area at the foot of the garden.

This is a relaxed yet well-connected spot, with Nunhead Station just a three minute walk from your door, and the high street just a little further.

MUNDAY'S



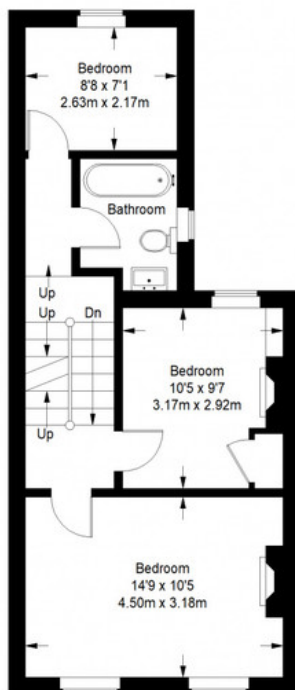
Munday's Estate Agents Ltd.
2 Mary Boast Walk
London SE5 8SP
020 3318 8900

www.mundays.com

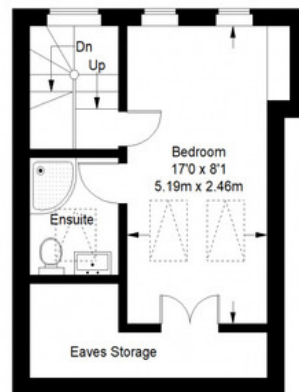
Buchan Road



Ground Floor = 547 sq ft



First Floor = 452 sq ft



Second Floor = 222 sq ft

Approximate Gross Internal Area
GROUND FLOOR = 547 sq ft / 50.82 sq m
FIRST FLOOR = 452 sq ft / 41.99 sq m
SECOND FLOOR (EXCLUDING EAVES STORAGE) = 222 sq ft / 20.62 sq m
Total = 1221 sq ft / 113.43 sq m



This plan is for layout guidance only. Not drawn to scale unless stated. Windows and door openings are approximate. Whilst every care is taken in the preparation of this plan, please check all dimensions, shapes and compass bearings before making any decisions reliant upon them. (ID357409)