

Brighton Grove, New Cross

£615,000



Lovely Victorian railway workers' cottage in a tucked-away row near New Cross Gate Station (regular and Windrush line services here) and brilliant bus routes as well. Built in 1858, these charming cottages were once for the employees of the nearby London & Brighton Railway - hence the name, Brighton Grove.

Set within Hatcham Conservation Area, your new home has two double bedrooms (one on each floor), a generous bathroom plus guest lavatory, a smart kitchen and a living/dining room onto the cute and low-maintenance 'city' garden. A new roof plus new Worcester Bosch boiler are welcome recent additions to the property.

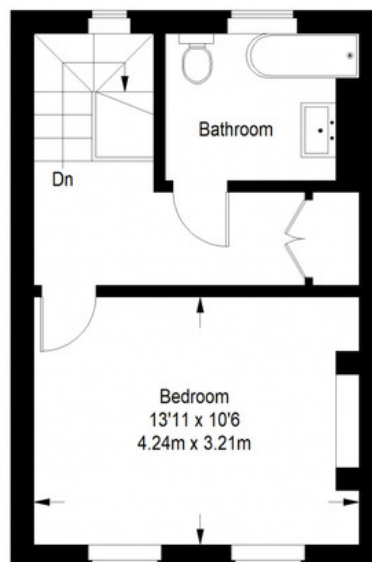
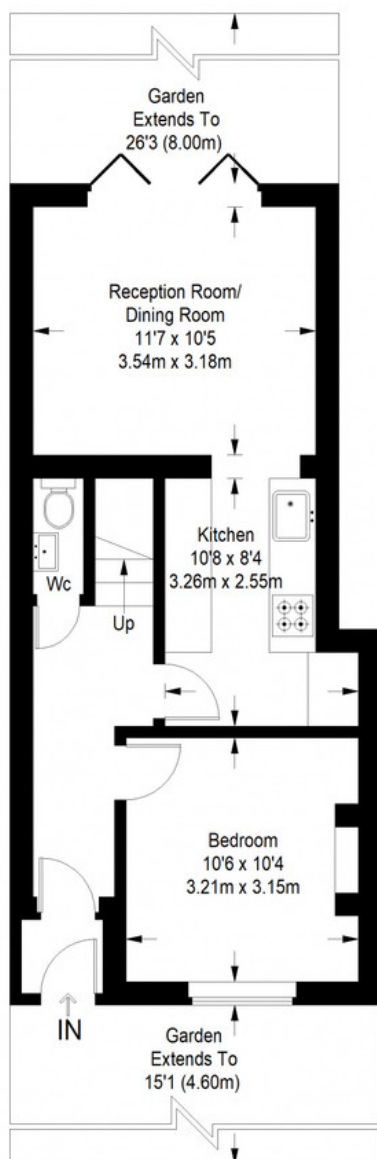
MUNDAY'S



Munday's Estate Agents Ltd.
2 Mary Boast Walk
London SE5 8SP
020 3318 8900

www.mundays.com

Brighton Grove



Ground Floor = 426 sq ft

First Floor = 298 sq ft

Approximate Gross Internal Area
 GROUND FLOOR = 426 sq ft / 39.58 sq m
 FIRST FLOOR = 298 sq ft / 27.68 sq m
 Total = 724 sq ft / 67.26 sq m



This plan is for layout guidance only. Not drawn to scale unless stated. Windows and door openings are approximate. Whilst every care is taken in the preparation of this plan, please check all dimensions, shapes and compass bearings before making any decisions reliant upon them. (ID357409)