

MUNDAY'S

## Brewster Cottages, Courthill Road, Hither Green

£550,000



Tidy and tucked-away mid-terrace double-fronted cottage, with two double bedrooms, and with double-glazing and wooden floors throughout.

Delivered over 878 square feet (excluding the boarded storage loft), your new pad has a calm gated mews setting with no neighbouring properties to the rear. Walk just 10 minutes to Hither Green Station and 12 minutes to Ladywell Station.

The property further offers a large SW-facing courtyard space (the vast majority of which - please see photos and floorplan - is demised to the house). It is ideal for enjoying afternoon sun, outdoor dining, and growing plants. There is unrestricted parking on Courthill Road.

*Munday's Estate Agents Ltd.*  
2 Mary Boast Walk  
London SE5 8SP  
020 3318 8900

[www.mundays.com](http://www.mundays.com)

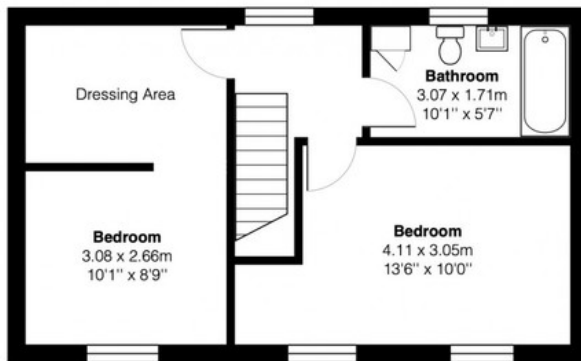


MUNDAY'S

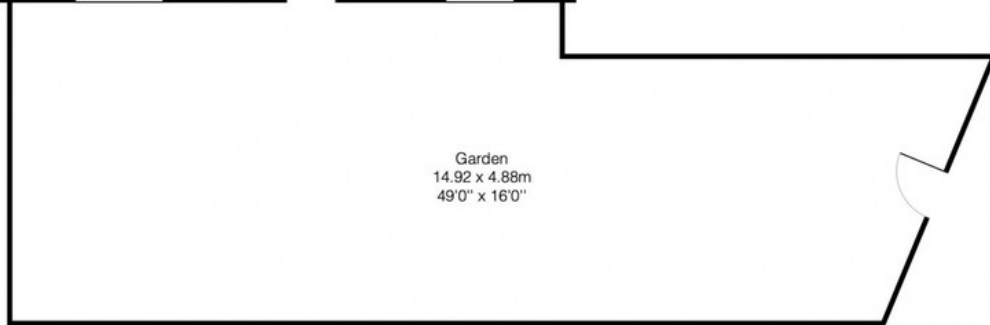
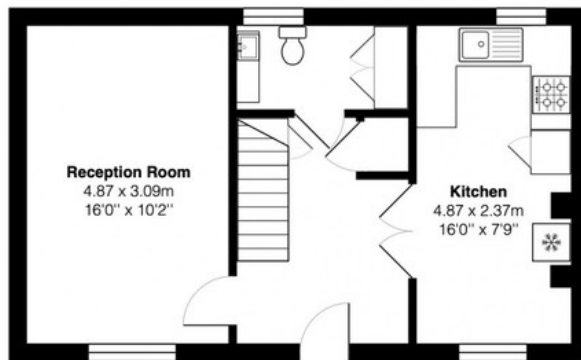


*Munday's Estate Agents Ltd.*  
2 Mary Boast Walk  
London SE5 8SP  
020 3318 8900

[www.mundays.com](http://www.mundays.com)



First Floor



Ground Floor

Total Area: 81.5 m<sup>2</sup> ... 878 ft<sup>2</sup> (excluding garden)  
All measurements are approximate and for display purposes only.