

MUNDAY'S

Borland Road, Nunhead

£995,000



Neat Nunhead Victorian end of terrace of 1115 square feet. The handsome house boasts three double bedrooms, and both bath and shower rooms, and is delivered over three floors.

Enjoy direct access - from your open-plan kitchen/diner - to a wonderful, well-established, west-facing garden (with a gated and wide side access too).

There is scope to extend (to the side and rear), should you fancy a project once-in.

Find it on a residential back street, tucked away in a delightful leafy little pocket of ever-popular SE15 - just off the top corner of Peckham Rye Park and Common's 113 acres, minutes from the beautiful nature reserve of Nunhead Cemetery.

Nunhead station (fast trains here for Victoria and Blackfriars) is your closest station. Peckham Rye, Crofton Park, Honor Oak Park and Brockley stations are also walkable/a short bus ride or cycle.

Munday's Estate Agents Ltd.
2 Mary Boast Walk
London SE5 8SP
020 3318 8900

www.mundays.com

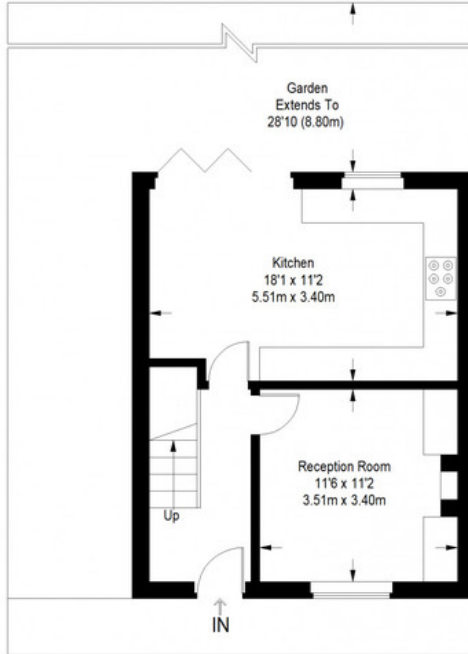
MUNDAY'S



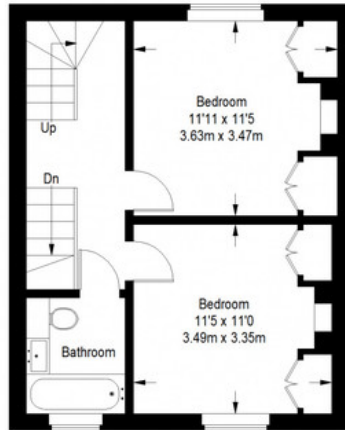
Munday's Estate Agents Ltd.
2 Mary Boast Walk
London SE5 8SP
020 3318 8900

www.mundays.com

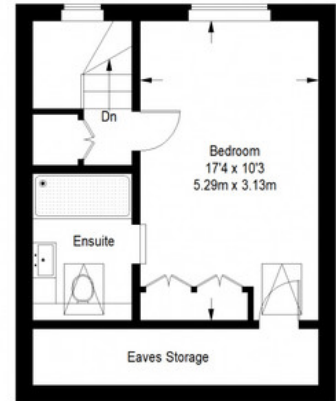
Borland Road



Ground Floor = 415 sq ft



First Floor = 412 sq ft



Second Floor = 288 sq ft

Approximate Gross Internal Area
 GROUND FLOOR = 415 sq ft / 38.55 sq m
 FIRST FLOOR = 412 sq ft / 38.27 sq m
 SECOND FLOOR (EXCLUDING EAVES STORAGE) = 288 sq ft / 26.76 sq m
 Total = 1115 sq ft / 103.58 sq m



This plan is for layout guidance only. Not drawn to scale unless stated. Windows and door openings are approximate. Whilst every care is taken in the preparation of this plan, please check all dimensions, shapes and compass bearings before making any decisions reliant upon them. (ID357409)