

MUNDAY'S

Bellwood Road, Nunhead

£1,000,000



Offers in excess of £1,000,000.

Bright four bed, three bath terraced house of 1724 square feet. The house blends nicely with its Victorian neighbour to its left, though was actually built in 2010 (one of a trio of homes). A part-walled and sunny south-east facing rear garden completes the attractive package.

It's a top spot, too: a popular residential street, with Ivydale Primary School close by. Walk 12 minutes to Nunhead or Brockley stations. Both are Fare Zone 2. You are also blissfully-close to Peckham Rye Park and Common (walk eight minutes) and to Nunhead Cemetery - one of 'The Magnificent Seven' (walk a few minutes).

Munday's Estate Agents Ltd.
2 Mary Boast Walk
London SE5 8SP
020 3318 8900

www.mundays.com

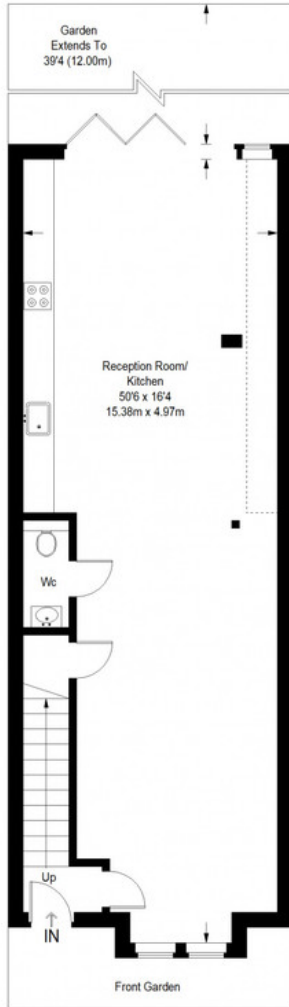
MUNDAY'S



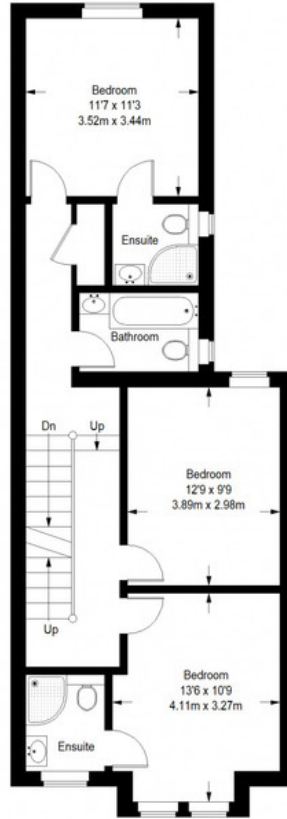
Munday's Estate Agents Ltd.
2 Mary Boast Walk
London SE5 8SP
020 3318 8900

www.mundays.com

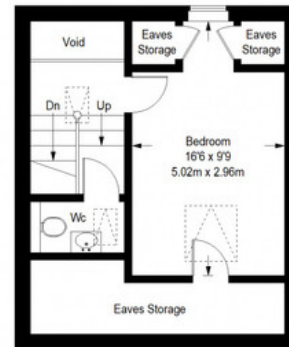
Bellwood Road



Ground Floor = 819 sq ft



First Floor = 685 sq ft



Second Floor = 220 sq ft

Approximate Gross Internal Area
 GROUND FLOOR = 819 sq ft / 76.09 sq m
 FIRST FLOOR = 685 sq ft / 63.64 sq m
 SECOND FLOOR = 220 sq ft / 20.44 sq m
 Total = 1724 sq ft / 160.16 sq m



This plan is for layout guidance only. Not drawn to scale unless stated. Windows and door openings are approximate. Whilst every care is taken in the preparation of this plan, please check all dimensions, shapes and compass bearings before making any decisions reliant upon them. (ID357409)