

Beatrice Place, Southfields

£425,000



Delightful and chain free oversized one bedroom (555 square feet) contemporary apartment, located in a peaceful residential spot in the popular Cambium development - delivered by Lendlease, who pride themselves on sustainable living and top quality design.

A private balcony to attractive green vistas completes the offering.

Walk just 15 minutes for the tube at Southfields: District line services, Fare Zone 3. Wimbledon Common is only 200 yards away. Wimbledon Park and Richmond Park are also within walking distance (or a short cycle).

MUNDAY'S

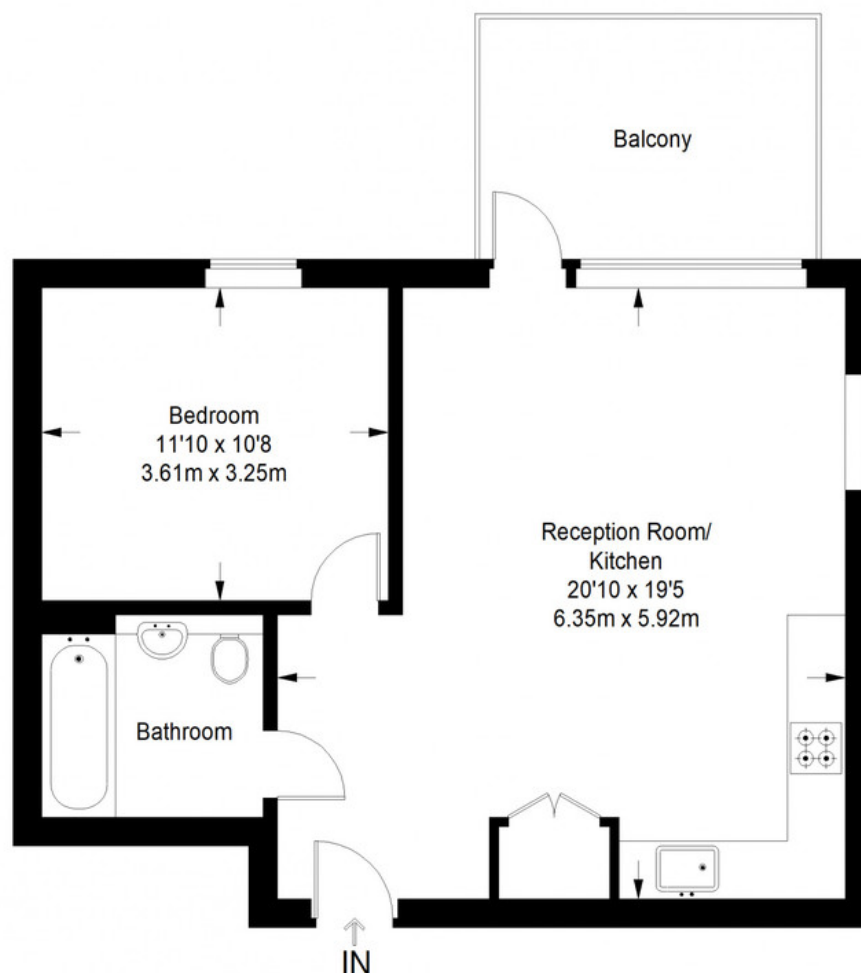


*Munday's Estate Agents Ltd.*  
2 Mary Boast Walk  
London SE5 8SP  
020 3318 8900

[www.mundays.com](http://www.mundays.com)

**MUNDAY'S**

## Cambium Apartments



**Second Floor = 555 sq ft**

Approximate Gross Internal Area  
SECOND FLOOR = 555 sq ft / 51.56 sq m  
Total = 555 sq ft / 51.56 sq m



This plan is for layout guidance only. Not drawn to scale unless stated. Windows and door openings are approximate. Whilst every care is taken in the preparation of this plan, please check all dimensions, shapes and compass bearings before making any decisions reliant upon them. (ID357409)

*Munday's Estate Agents Ltd.*  
2 Mary Boast Walk  
London SE5 8SP  
020 3318 8900

[www.mundays.com](http://www.mundays.com)