

MUNDAY'S

Barforth Road, Nunhead

£425,000



Bright and delightful one bedroom first (top) floor flat of 535 square feet, within a Victorian semi, without a chain. Share of Freehold.

Find this pleasing pad on a quiet residential Nunhead street, with unrestricted parking.

Walk just 10 minutes to Nunhead Station, and 15 to Peckham Rye Station (both are Fare Zone 2). You're also close to Nunhead's high street and central green, and to Peckham Rye Park and Common's 113 acres - walk but five minutes to each.

Munday's Estate Agents Ltd.
2 Mary Boast Walk
London SE5 8SP
020 3318 8900

www.mundays.com

MUNDAY'S

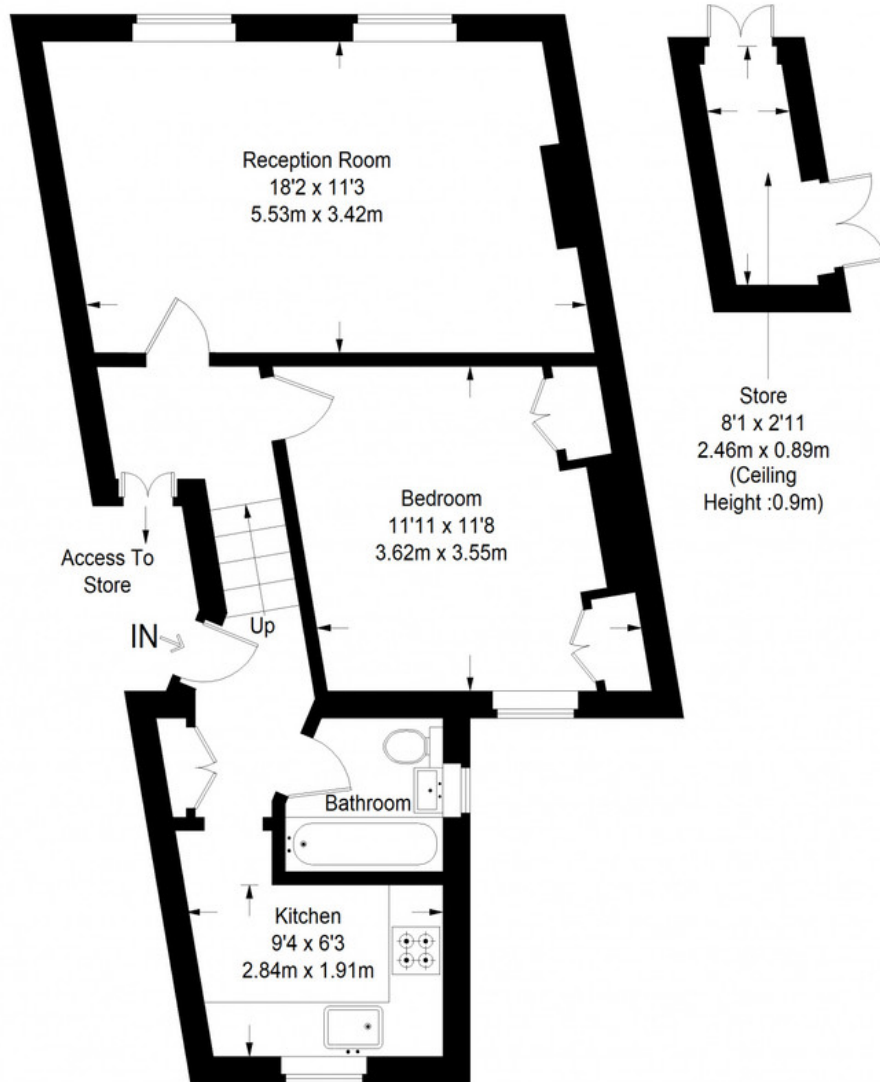


Munday's Estate Agents Ltd.
2 Mary Boast Walk
London SE5 8SP
020 3318 8900

www.mundays.com

MUNDAY'S

Barforth Road



Floor = 535 sq ft

Approximate Gross Internal Area
FIRST FLOOR = 535 sq ft / 50 sq m
Total = 535 sq ft / 50 sq m



This plan is for layout guidance only. Not drawn to scale unless stated. Windows and door openings are approximate. Whilst every care is taken in the preparation of this plan, please check all dimensions, shapes and compass bearings before making any decisions reliant upon them. (ID357409)

Munday's Estate Agents Ltd.
2 Mary Boast Walk
London SE5 8SP
020 3318 8900

www.mundays.com