

Avonley Road, New Cross

£399,950



Larger than average one bedroom first floor flat within a handsome hospital conversion (opened in 1877, and converted in the early nineteen nineties). Parking is available on-site for residents.

The flat measures in at 614 square feet and enjoys a good layout including a notably big reception room.

Your local stations are New Cross Gate and Queens Road Peckham. Both are a 12 minute walk, Zone 2, and on the Overground network.

Bus travel is easy from here too (walk four minutes to your most local stop, on Old Kent Road).

MUNDAY'S

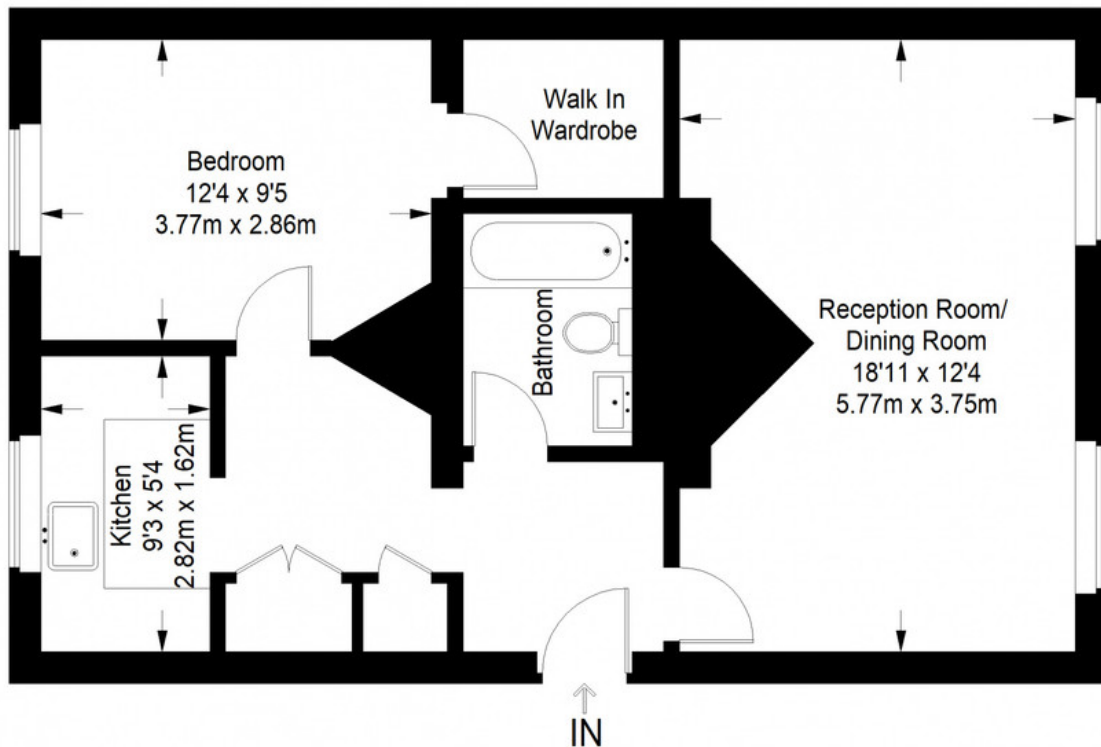


Munday's Estate Agents Ltd.
2 Mary Boast Walk
London SE5 8SP
020 3318 8900

www.mundays.com

MUNDAY'S

Mendip Court



First Floor = 614 sq ft

Approximate Gross Internal Area
FIRST FLOOR = 614 sq ft / 57.04 sq m
Total = 614 sq ft / 57.04 sq m



This plan is for layout guidance only. Not drawn to scale unless stated. Windows and door openings are approximate. Whilst every care is taken in the preparation of this plan, please check all dimensions, shapes and compass bearings before making any decisions reliant upon them. (ID357409)