

Asylum Road, Peckham

£950,000



Offers in excess of £950,000.

A beautiful and characterful flat-fronted semi-detached C19th cottage, with a low-maintenance east-facing 'city' garden (with direct and side access) and a substantial garden studio, too.

One of a handsome pair, the house has a strong layout, with both bath and shower rooms, a neutral decorative scheme, and a welcome pared back theme.

The location is also winning - you are pretty much opposite Asylum Chapel and the neighbouring delightful almshouses (listed/protected). Walk just eight minutes to Queens Road Peckham Station for regular and Overground services, or jump on a bus from Old Kent Road (your closest bus stop is just a few minutes away).

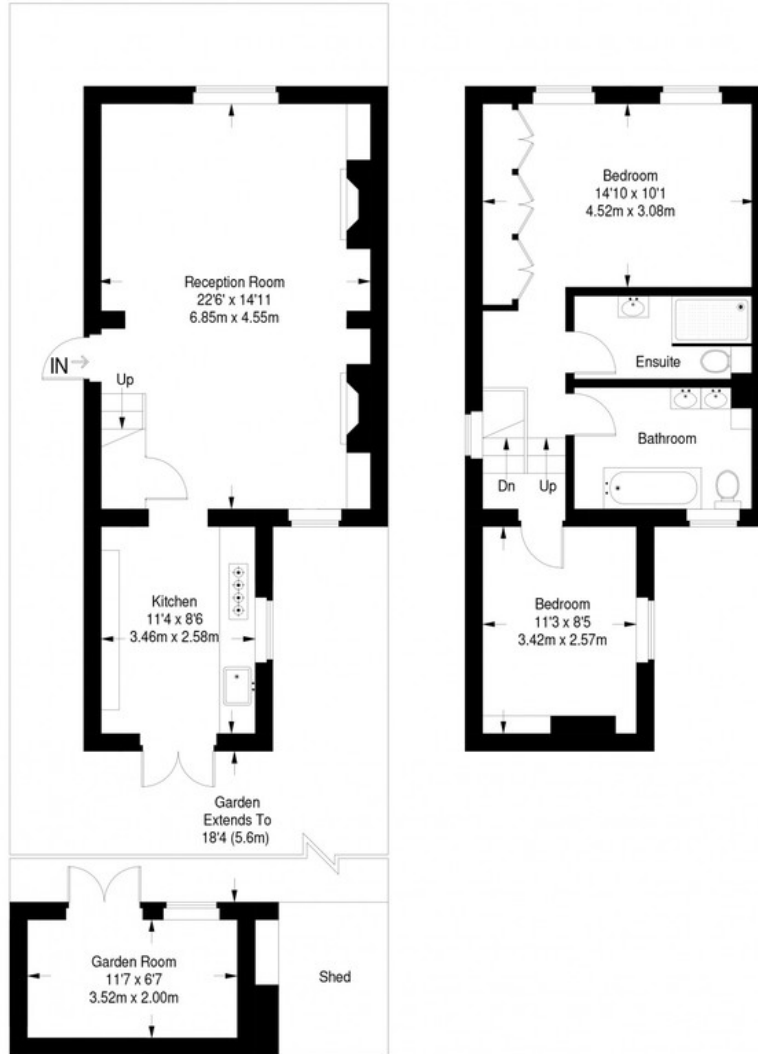
MUNDAY'S



Munday's Estate Agents Ltd.
2 Mary Boast Walk
London SE5 8SP
020 3318 8900

www.mundays.com

Asylum Road



Ground Floor = 522 sq ft

First Floor = 442 sq ft

Approximate Gross Internal Area
 GROUND FLOOR (including garden room, excluding shed) = 522 sq ft / 48.47 sq m
 FIRST FLOOR = 442 sq ft / 41.06 sq m
 Total = 964 sq ft / 89.53 sq m



This plan is for layout guidance only. Not drawn to scale unless stated. Windows and door openings are approximate. Whilst every care is taken in the preparation of this plan, please check all dimensions, shapes and compass bearings before making any decisions reliant upon them. (ID357409)