

MUNDAY'S

Astbury Road, Peckham

£925,000



Optimised bay-fronted Victorian terrace of 1381 square feet, delivering five bedrooms and two bathrooms (plus a guest lavatory) over three floors. A low-maintenance garden with well-stocked borders completes the package. Parking is unrestricted, on the street.

Welcome features include energy-efficient double-glazed windows throughout, fresh plaster and paint (with accent walls in each room), and smart engineered oak flooring to many rooms.

Find your new home on a blossom-tree-lined residential street, pleasingly close to Queens Road Peckham Station (under five minutes by foot) for regular and Overground rail services. You're also but a 15 minute walk from Nunhead Station and Peckham Rye Station (Fare Zone 2), Nunhead's high street area, and Rye Lane.

Munday's Estate Agents Ltd.
2 Mary Boast Walk
London SE5 8SP
020 3318 8900

www.mundays.com

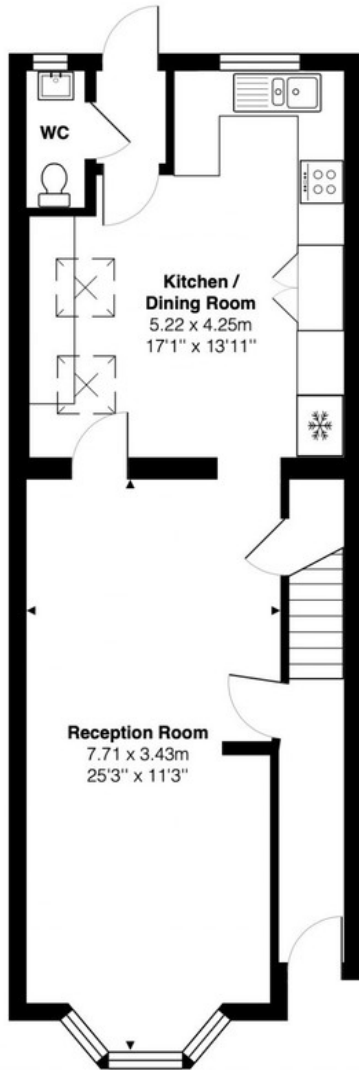
MUNDAY'S



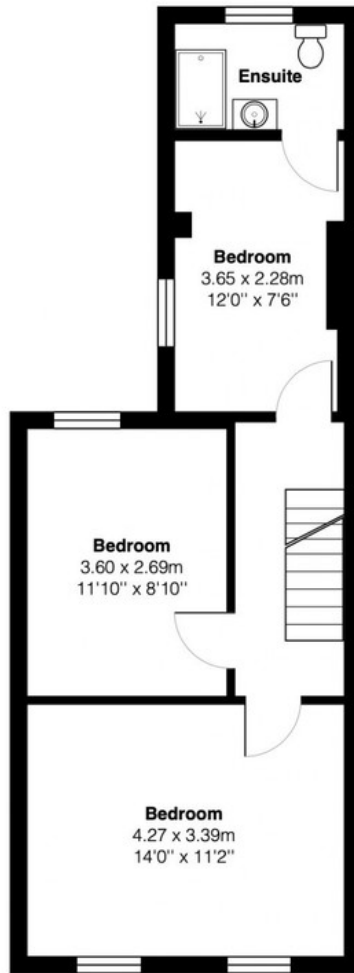
Munday's Estate Agents Ltd.
2 Mary Boast Walk
London SE5 8SP
020 3318 8900

www.mundays.com

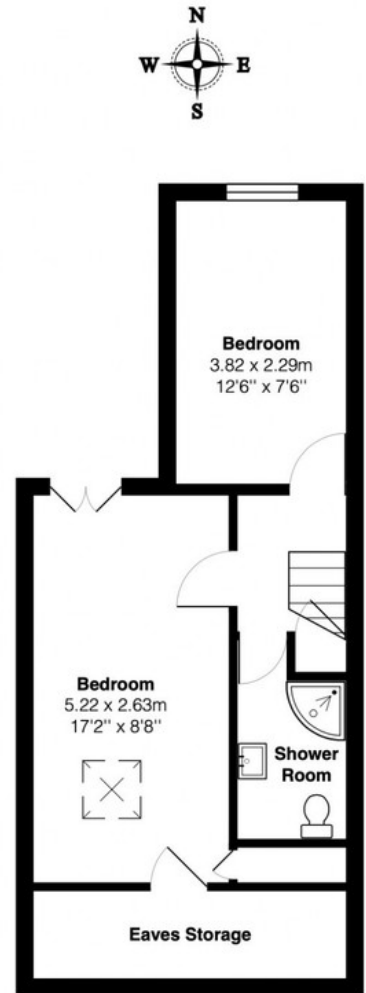
MUNDAY'S



Ground Floor



First Floor



Second Floor



Total Area: 128.3 m² ... 1381 ft² (excluding eaves storage)
All measurements are approximate and for display purposes only.

Munday's Estate Agents Ltd.
2 Mary Boast Walk
London SE5 8SP
020 3318 8900

www.mundays.com