

MUNDAY'S

Ashmead Road, St John's

£1,350,000



Architecturally-treated four bed, two bath terrace of 1866 square feet, with a mature and professionally-landscaped garden extending over 80 feet.

Popular Ashmead Primary School is just over the road (3-11). Pleasingly, the house is being sold without a chain.

Find the cleverly, thoroughly and extensively renovated home in the exclusive St John's Conservation Area, which adjoins Brookmill Conservation Area.

We love the old-fashioned street lamps and general leafiness of the locale! Ashmead Road is of the pretty, tree-lined and residential variety, and is a one-way, so it's quiet, too.

You're a two minute walk from St John's station (Zone 2) and a 10 minute walk from Elverson Road and Deptford Bridge DLR stations. Blackheath, Greenwich and Lewisham are all easily walkable.

Munday's Estate Agents Ltd.
2 Mary Boast Walk
London SE5 8SP
020 3318 8900

www.mundays.com

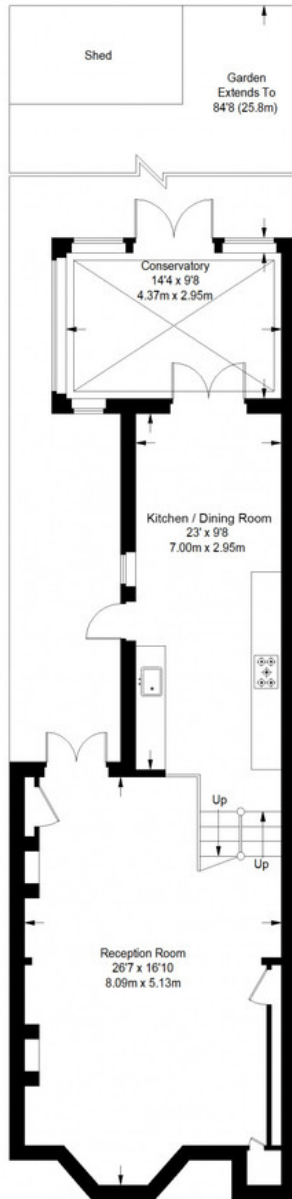
MUNDAY'S



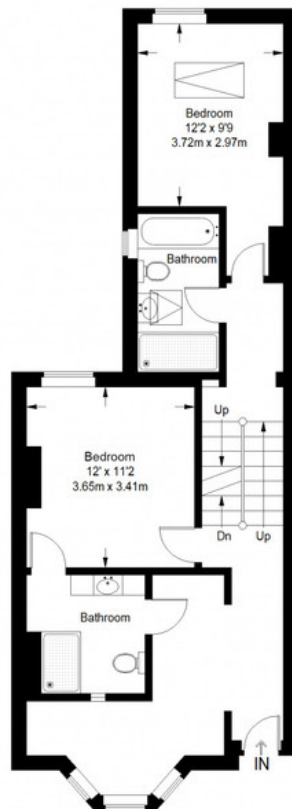
Munday's Estate Agents Ltd.
2 Mary Boast Walk
London SE5 8SP
020 3318 8900

www.mundays.com

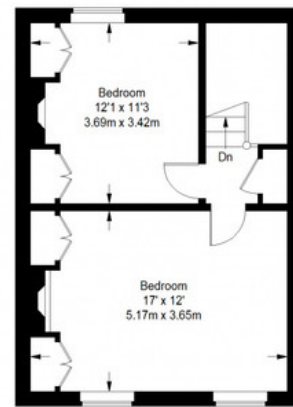
Ashmead Road



Lower Ground Floor = 827 sq ft



Ground Floor = 663 sq ft



First Floor = 376 sq ft

Approximate Gross Internal Area
 LOWER GROUND FLOOR = 827 sq ft / 76.83 sq m
 GROUND FLOOR = 663 sq ft / 61.59 sq m
 FIRST FLOOR = 376 sq ft / 34.93 sq m
 Total = 1866 sq ft / 173.35 sq m



This plan is for layout guidance only. Not drawn to scale unless stated. Windows and door openings are approximate. Whilst every care is taken in the preparation of this plan, please check all dimensions, shapes and compass bearings before making any decisions reliant upon them. (ID357409)