

Arbuthnot Road, New Cross

£535,000



Cool two double bedroom ground floor flat of 647 feet, with a communal garden and skyline views, on one of Telegraph Hill Conservation Area's lovely wide tree-lined slopes. Parking is unrestricted, on-street.

What a hot spot! Walk just 10 minutes to both New Cross Gate and Queens Road Peckham stations. Both are Fare Zone 2 and on the Overground network (Windrush line), as well as offering regular services. Nunhead Station and town centre are just a 14 minute walk.

This leafy hillside residential area (once the home of Victorian poet Robert Browning) was developed in the late C19th, replacing market gardens - which were owned by the Worshipful Company of Haberdashers, who controlled the development - with high standard housing, on wide plane-tree-lined streets.

MUNDAY'S

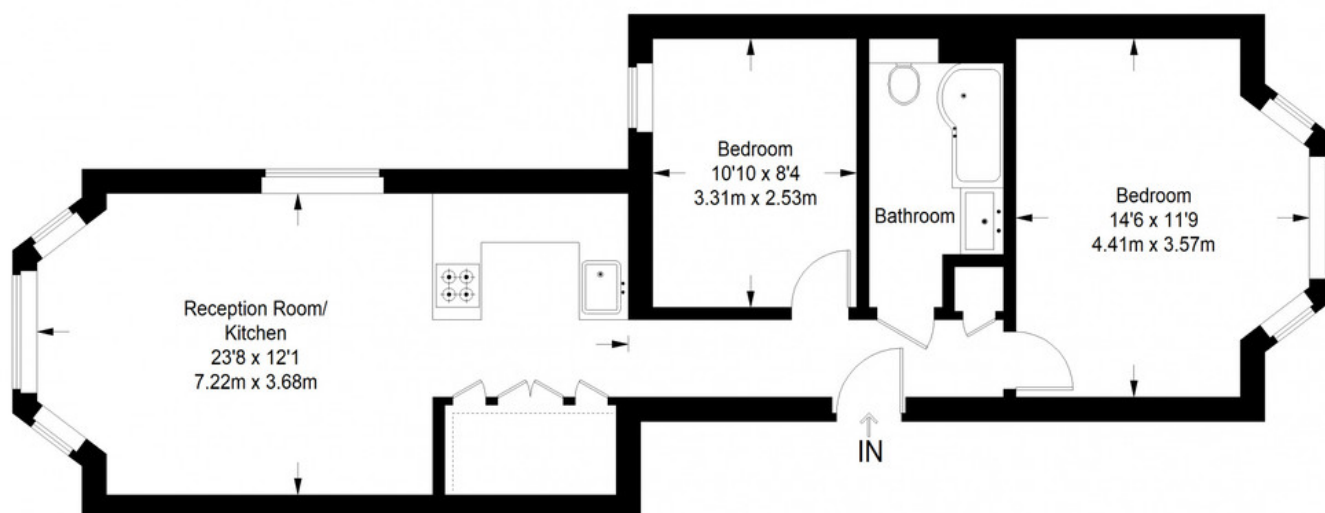


Munday's Estate Agents Ltd.
2 Mary Boast Walk
London SE5 8SP
020 3318 8900

www.mundays.com

MUNDAY'S

Arbuthnot Road



Ground Floor = 647 sq ft

Approximate Gross Internal Area
GROUND FLOOR = 647 sq ft / 60.11 sq m
Total = 647 sq ft / 60.11 sq m



This plan is for layout guidance only. Not drawn to scale unless stated. Windows and door openings are approximate. Whilst every care is taken in the preparation of this plan, please check all dimensions, shapes and compass bearings before making any decisions reliant upon them. (ID357409)

Munday's Estate Agents Ltd.
2 Mary Boast Walk
London SE5 8SP
020 3318 8900

www.mundays.com