

MUNDAY'S

Albyn Road, St John's

£1,150,000



Beautiful bay-fronted three double bedroom semi-detached house over three original floors, with a professionally-landscaped rear garden (which has direct and gated side access). There is internal insulation to all external walls plus modern double glazing throughout, keeping you cosy in the colder months. Residents have permit-parking.

Find this sensitively and smartly modernised period home on a quiet residential street (with such delightful Victorian street lamps) in the exclusive St John's Conservation Area, which adjoins Brookmill CA. It is a friendly community to call home, with an annual street party on nearby Ashmead Road.

Stroll just three minutes to St John's Station (Zone 2). Or walk 15 minutes to either Elverson Road or Deptford Bridge DLR stations. Blackheath, Greenwich, New Cross and Lewisham are all easily walkable.

Munday's Estate Agents Ltd.
2 Mary Boast Walk
London SE5 8SP
020 3318 8900

www.mundays.com

MUNDAY'S

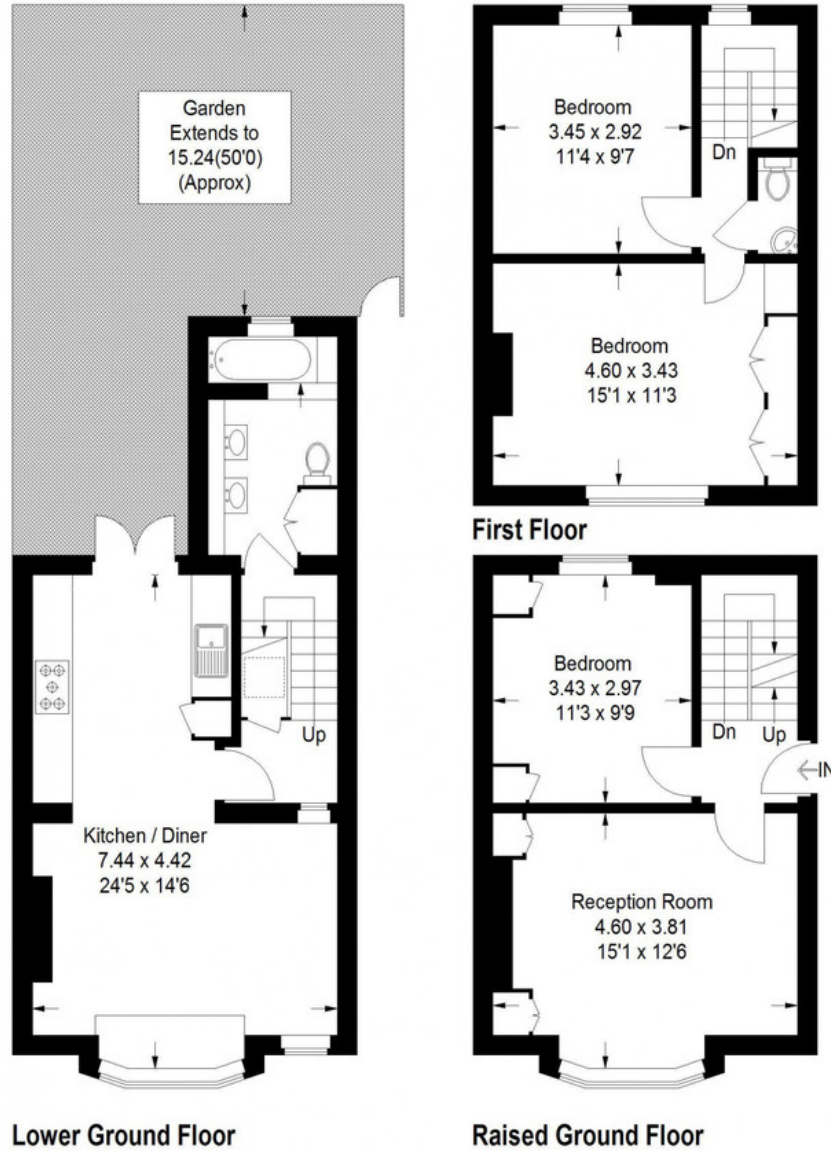


Munday's Estate Agents Ltd.
2 Mary Boast Walk
London SE5 8SP
020 3318 8900

www.mundays.com

Albyn Road, SE8

Approximate Gross Internal Area
105.3 sq m / 1134 sq ft



= Reduced headroom below 1.5 m / 5'0

This plan is for layout guidance only. Not drawn to scale unless stated. Windows and door openings are approximate. Whilst every care is taken in the preparation of this plan, please check all dimensions, shapes and compass bearings before making any decisions reliant upon them. (ID1306469)