

Adys Road, Peckham Rye

£775,000



Fab ground floor two bedroom Victorian conversion garden flat of 781 square feet. It will be ready for you in February!

Sliding doors at the back of the property from your main reception/kitchen/dining room (a deftly-done extension to the property's original footprint) provide direct access to your own private west-facing garden. With its twist of south, it's a great suntrap for late morning through to late afternoon sun. A new lease of 125 years completes the offering.

You are in popular Peckham Rye/East Dulwich borderland, only 12 minutes from Peckham Rye Station, and eight from East Dulwich Station (both Fare Zone 2). You are also just a few minutes from Bellenden Road in one direction, and Goose Green in the other.

Pleasingly, the well-established boutique developer is giving the buyer welcome freedom to customise the final design - you can choose the finishing touches you want - including kitchen (fronts and handles),

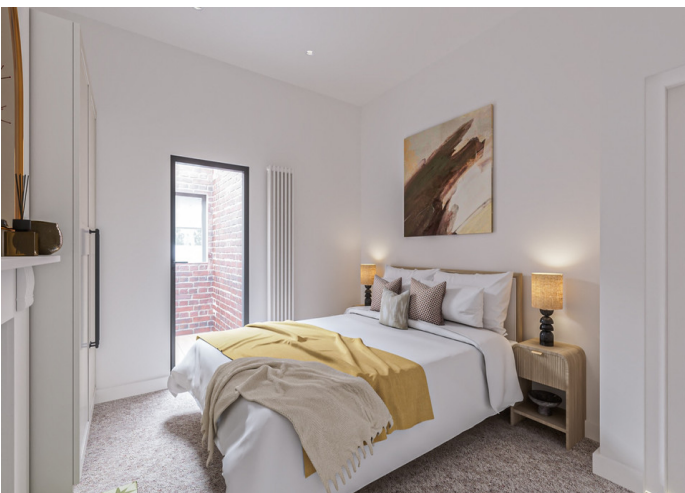
bike storage and more. Please ask us for

**MUNDAY'S**

*Munday's Estate Agents Ltd.*  
2 Mary Boast Walk  
London SE5 8SP  
020 3318 8900

[www.mundays.com](http://www.mundays.com)

MUNDAY'S



*Munday's Estate Agents Ltd.*  
2 Mary Boast Walk  
London SE5 8SP  
020 3318 8900

[www.mundays.com](http://www.mundays.com)

**MUNDAY'S**

**Adys Road, SE15**  
Ground Floor Apartment



**Approximate Gross Internal Area**  
Ground Floor = 781 sqft / 72.6 sqm

Whilst every care is taken in the preparation of these plans and images, please check all dimensions, shapes and compass bearings before making any decision reliant upon them.

*Munday's Estate Agents Ltd.*  
2 Mary Boast Walk  
London SE5 8SP  
020 3318 8900

[www.mundays.com](http://www.mundays.com)