

MUNDAY'S

Knatchbull Road, Camberwell

£4,250,000



Park-side Brunswick House and The Coach House (built circa 1871) are looking for new owners and custodians. What a dream proposition. 12 bedrooms, six bathrooms, and so much more!

You will occupy an impressive and quiet sizeable corner plot, with a wonderful walled wraparound garden, and park and church spire vistas. The deep and wide rear garden (splendidly facing south-east) has a swimming pool, and both a generous lawn and a raised terrace (accessed from the main house).

This is a particularly leafy residential spot within Lambeth's Minet Conservation Area. You are tucked away from the hustle and bustle, yet extremely well-placed for connectivity to central London. And being directly opposite the lovely Myatt's Fields Park, you will enjoy front-row open views from which to follow the seasons.

Munday's Estate Agents Ltd.
2 Mary Boast Walk
London SE5 8SP
020 3318 8900

www.mundays.com

MUNDAY'S



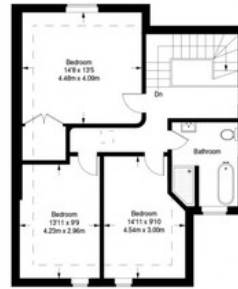
Munday's Estate Agents Ltd.
2 Mary Boast Walk
London SE5 8SP
020 3318 8900

www.mundays.com

Brunswick House and The Coach House, 97 Knatchbull Road



First Floor = 1603 sq ft



Second Floor = 745 sq ft



Lower Ground Floor = 1291 sq ft



Ground Floor = 1630 sq ft

Approximate Gross Internal Area
 LOWER GROUND FLOOR (including workshop) = 1291 sq ft / 119.93 sq m
 GROUND FLOOR = 1630 sq ft / 151.45 sq m
 FIRST FLOOR = 1603 sq ft / 148.9 sq m
 SECOND FLOOR = 745 sq ft / 69.18 sq m
 Total = 5269 sq ft / 489.56 sq m

This plan is for layout guidance only. Not drawn to scale unless stated. Windows and door openings are approximate. Whilst every care is taken in the preparation of this plan, please check all dimensions, shapes and complex bearings before making any decisions about your offer. (C007-008)